

Product datasheet for **AP06133PU-M**

GANP (MCM3AP) Rabbit Polyclonal Antibody

Product data:

Product Type:	Primary Antibodies
Applications:	IHC, WB
Recommended Dilution:	Western blot: 1/500-1/1000. Immunohistochemistry on paraffin sections: 1/50-1/200.
Reactivity:	Human, Mouse
Host:	Rabbit
Clonality:	Polyclonal
Immunogen:	Synthetic peptide, corresponding to amino acids 1841-1890 of Human GANP.
Specificity:	This antibody detects endogenous levels of GANP/MCM3AP protein. (region surrounding Glu1872)
Formulation:	Phosphate buffered saline (PBS), pH 7.2. State: Aff - Purified State: Liquid purified Ig fraction (> 95% pure by SDS-PAGE) Preservative: 0.05% Sodium azide
Concentration:	1.0 mg/ml
Purification:	Affinity-chromatography using epitope-specific immunogen and the purity is > 95% (by SDS-PAGE)
Conjugation:	Unconjugated
Storage:	Store undiluted at 2-8°C for one month or (in aliquots) at -20°C for longer. Avoid repeated freezing and thawing.
Stability:	Shelf life: one year from despatch.
Predicted Protein Size:	~ 218 kDa
Gene Name:	minichromosome maintenance complex component 3 associated protein
Database Link:	Entrez Gene 54387 Mouse Entrez Gene 8888 Human O60318



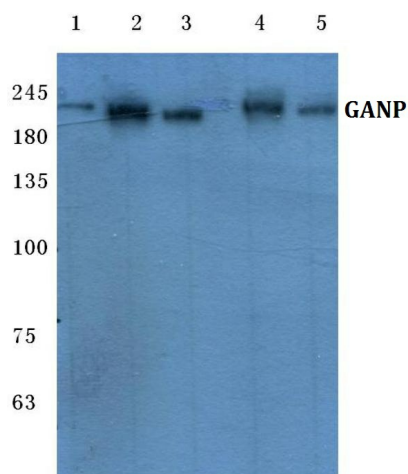
[View online »](#)

Background:

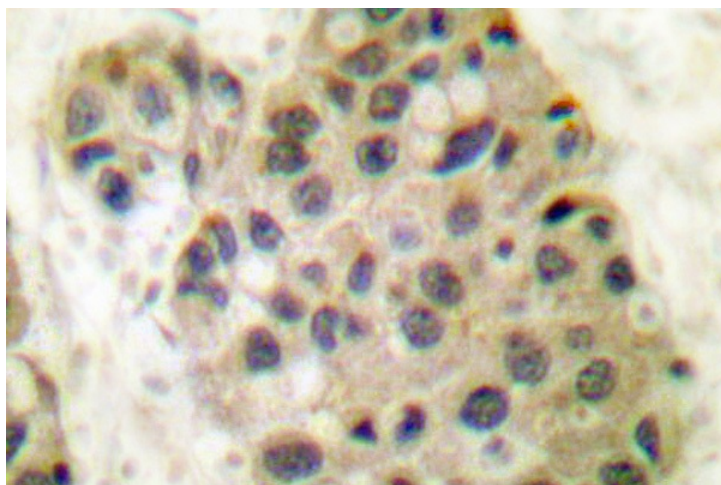
Minichromosome maintenance protein 3 (MCM3) is a protein essential for the initiation of DNA replication. MCM3-associated protein (MCM3AP), also known as GANP or MAP80, is a 1980 amino acid protein which binds to MCM3. MCM3AP is an acetyltransferase that acetylates MCM3, thereby playing an indirect role in DNA replication. MCM3AP is also believed to be involved in the nuclear localization of MCM3. Localized to the nucleus and the cytoplasm, GANP (MCM3AP) is thought to have phosphorylation-dependent DNA-primase activity that is up-regulated in germinal center regions. MCM3AP contains a nuclear localization signal, a coiled-coil structure and four LXXLL motifs.

Synonyms:

GANP, KIAA0572, MAP80

Product images:


Western blot (WB) analysis of GANP antibody at 1/500 dilution Lane 1:Hela whole cell lysate Lane 2:MCF-7 whole cell lysate Lane 3:Raw264.7 whole cell lysate Lane 4:Mouse liver tissue lysate Lane 5:Rat kidney tissue lysate



Immunohistochemistry (IHC) analyzes of GANP/MCM3AP antibody in paraffin-embedded human breast carcinoma tissue.