

Product datasheet for **AP06132PU-M**

Galectin 3 (LGALS3) Rabbit Polyclonal Antibody

Product data:

Product Type:	Primary Antibodies
Applications:	IF, IHC, WB
Recommended Dilution:	Western blot: 1/500-1/1000. Immunofluorescence: 1/50-1/200. Immunohistochemistry on Paraffin Sections: 1/50-1/200.
Reactivity:	Human, Mouse, Rat
Host:	Rabbit
Clonality:	Polyclonal
Immunogen:	Synthetic peptide, corresponding to amino acids 140-190 of Human Galectin-3.
Specificity:	This antibody detects endogenous levels of Galectin 3 / CBP35 protein. (region surrounding asn174)
Formulation:	PBS, pH~7.2 with 0.02% Sodium Azide, 50% Glycerol. State: Aff - Purified State: Liquid purified Ig fraction (> 95% pure by SDS-PAGE)
Concentration:	1.0 mg/ml
Purification:	Affinity Chromatography using epitope-specific immunogen
Conjugation:	Unconjugated
Storage:	Store undiluted at 2-8°C for one month or (in aliquots) at -20°C for longer. Avoid repeated freezing and thawing.
Stability:	Shelf life: one year from despatch.
Predicted Protein Size:	~ 30 kDa
Gene Name:	lectin, galactoside binding soluble 3
Database Link:	Entrez Gene 3958 Human P17931

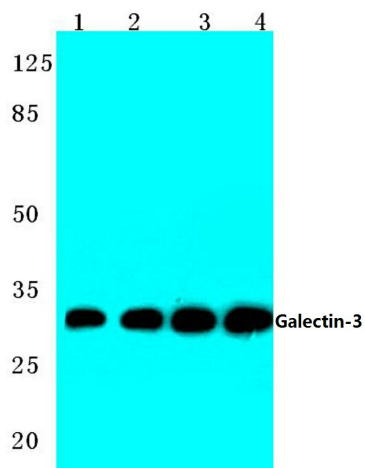
[View online »](#)

Background:

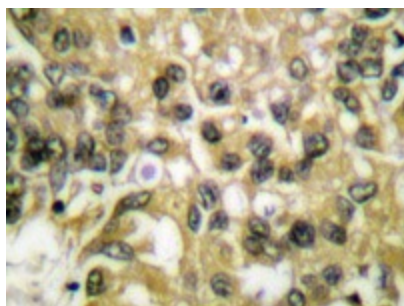
The galectin-3 protein, also known as Mac-2, hMac-2, GALBP, CBP35 or LGALS3, contains a single carbohydrate binding domain, which binds galactose-containing glycoconjugates. galectin-3 is expressed in colonic and intestinal epithelium, inflammatory macrophages, papillary and follicular carcinomas, neoplastic astrocytes and some B and T lymphocytes. Upregulated expression of galectin-3 is involved in cancer progression and metastasis. galectin-3 mediates the endocytosis of β -1 Integrins in a lactose-dependant manner and is associated with thyroid malignancy and Crohn's disease. It may also be used as a marker for diagnosing cases involving Hurthle cell adenomas and carcinomas.

Synonyms:

Mac-2, Lgals3, GAL3, GALBP, CBP35, L-31

Product images:


Western blot analysis of Galectin-3 antibody. at 1/500 dilution: Lane 1: Hela whole cell lysate. Lane 2: Mouse liver tissue lysate. Lane 3: Raw264.7 whole cell lysate. Lane 4: Rat liver tissue lysate.



Immunohistochemistry analysis with Galectin-3 antibody in paraffin-embedded human lung carcinoma tissue.