

## Product datasheet for **AP06129PU-N**

### **GABA A Receptor beta 1 (GABRB1) Rabbit Polyclonal Antibody**

#### **Product data:**

Product Type:	Primary Antibodies
Applications:	IHC, WB
Recommended Dilution:	<b>Western blot:</b> 1/500-1/1000. <b>Immunohistochemistry on paraffin sections:</b> 1/50-1/200.
Reactivity:	Human, Mouse, Rat
Host:	Rabbit
Clonality:	Polyclonal
Immunogen:	Synthetic peptide, corresponding to amino acids 320-370 of Human GABAA R $\beta$ 1.
Specificity:	This antibody detects endogenous levels of GABA-RB protein. (region surrounding Arg328)
Formulation:	Phosphate buffered saline (PBS), pH 7.2. State: Aff - Purified State: Liquid purified Ig fraction (> 95% pure by SDS-PAGE). Preservative: 0.05% Sodium azide
Concentration:	1.0 mg/ml
Purification:	Affinity Chromatography using epitope-specific immunogen.
Conjugation:	Unconjugated
Storage:	Store undiluted at 2-8°C for one month or (in aliquots) at -20°C for longer. Avoid repeated freezing and thawing.
Stability:	Shelf life: one year from despatch.
Predicted Protein Size:	~ 54 kDa
Gene Name:	gamma-aminobutyric acid type A receptor beta1 subunit
Database Link:	<a href="#">Entrez Gene 2560 Human P18505</a>



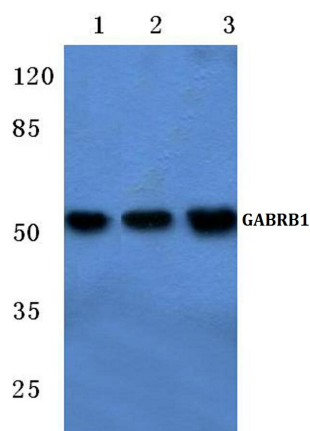
[View online »](#)

**Background:**

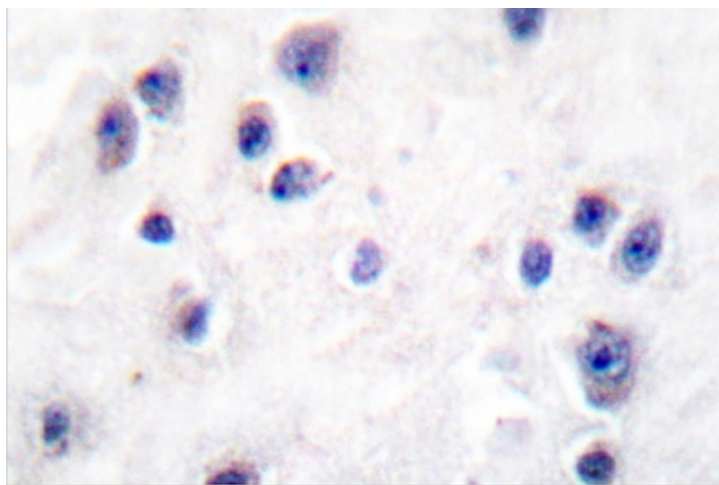
GAD-65 and GAD-67, glutamate decarboxylases function to catalyze the production of GABA ( $\gamma$ -aminobutyric acid). In the central nervous system GABA functions as the main inhibitory transmitter by increasing a Cl<sup>-</sup> conductance that inhibits neuronal firing. GABA has been shown to activate both ionotropic (GABAA) and metabotropic (GABAB) receptors as well as a third class of receptors called GABAC. Both GABAA and GABAC are ligand-gated ion channels, however, they are structurally and functionally distinct. Members of the GABAA receptor family include GABAA R $\alpha$ 1-6, GABAA R $\beta$ 1-3, GABAA R $\epsilon$ , GABAA R $\delta$ , GABAA Ry1-3, GABAA Ry1 and GABAA Ry2. The GABAB family is composed of GABAB R1 $\alpha$  and GABAB R1 $\beta$ . GABA transporters have also been identified and include GABA T-1, GABA T-2 and GABA T-3 (also designated GAT-1, -2 and -3). The GABA transporters function to terminate GABA action.

**Synonyms:**

GABRB-1, GABA A receptor subunit beta-1

**Product images:**

Western blot (WB) analysis of GABAA R $\beta$ 1 antibody at 1/500 dilution Lane 1: MCF-7 cell lysate Lane 2: Mouse liver tissue lysate Lane 3: Rat liver tissue lysate



Immunohistochemistry (IHC) analysis of GABA-RB antibody in paraffin-embedded human brain tissue.