

Product datasheet for **AP06129PU-M**

GABA A Receptor beta 1 (GABRB1) Rabbit Polyclonal Antibody

Product data:

Product Type:	Primary Antibodies
Applications:	IHC, WB
Recommended Dilution:	Western blot: 1/500-1/1000. Immunohistochemistry on paraffin sections: 1/50-1/200.
Reactivity:	Human, Mouse, Rat
Host:	Rabbit
Clonality:	Polyclonal
Immunogen:	Synthetic peptide, corresponding to amino acids 320-370 of Human GABAA Rβ1.
Specificity:	This antibody detects endogenous levels of GABA-RB protein. (region surrounding Arg328)
Formulation:	Phosphate buffered saline (PBS), pH 7.2. State: Aff - Purified State: Liquid purified Ig fraction (> 95% pure by SDS-PAGE). Preservative: 0.05% Sodium azide
Concentration:	1.0 mg/ml
Purification:	Affinity Chromatography using epitope-specific immunogen.
Conjugation:	Unconjugated
Storage:	Store undiluted at 2-8°C for one month or (in aliquots) at -20°C for longer. Avoid repeated freezing and thawing.
Stability:	Shelf life: one year from despatch.
Predicted Protein Size:	~ 54 kDa
Gene Name:	gamma-aminobutyric acid type A receptor beta1 subunit
Database Link:	<u>Entrez Gene 2560 Human P18505</u>



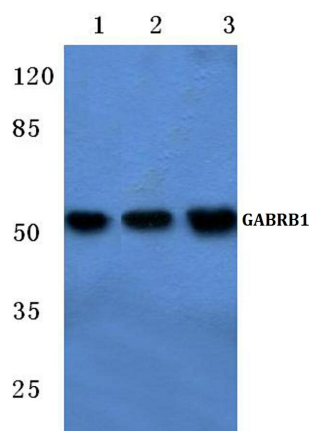
[View online »](#)

Background:

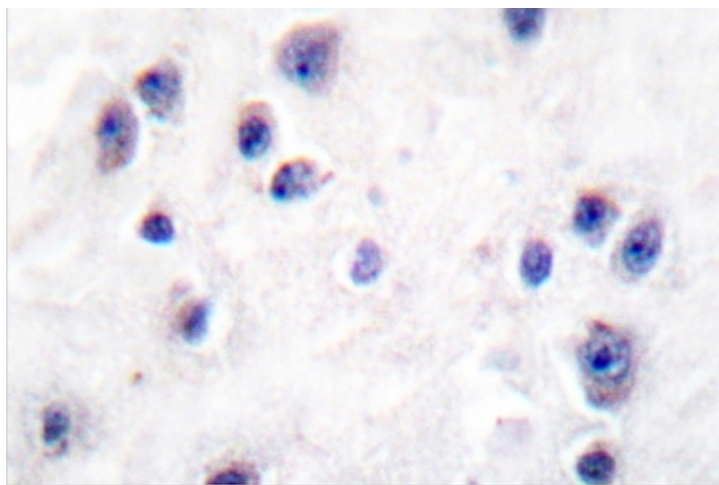
GAD-65 and GAD-67, glutamate decarboxylases function to catalyze the production of GABA (γ-aminobutyric acid). In the central nervous system GABA functions as the main inhibitory transmitter by increasing a Cl⁻ conductance that inhibits neuronal firing. GABA has been shown to activate both ionotropic (GABAA) and metabotropic (GABAB) receptors as well as a third class of receptors called GABAC. Both GABAA and GABAC are ligand-gated ion channels, however, they are structurally and functionally distinct. Members of the GABAA receptor family include GABAA Rα1-6, GABAA Rβ1-3, GABAA Rε, GABAA Rδ, GABAA Ry1-3, GABAA Ry1 and GABAA Ry2. The GABAB family is composed of GABAB R1α and GABAB R1β. GABA transporters have also been identified and include GABA T-1, GABA T-2 and GABA T-3 (also designated GAT-1, -2 and -3). The GABA transporters function to terminate GABA action.

Synonyms:

GABRB-1, GABA A receptor subunit beta-1

Product images:


Western blot (WB) analysis of GABAA Rβ1 antibody at 1/500 dilution Lane 1: MCF-7 cell lysate Lane 2: Mouse liver tissue lysate Lane 3: Rat liver tissue lysate



Immunohistochemistry (IHC) analysis of GABA-RB antibody in paraffin-embedded human brain tissue.