

## Product datasheet for **AP06128PU-N**

### **GABA B Receptor 1 (GABBR1) Rabbit Polyclonal Antibody**

#### **Product data:**

Product Type:	Primary Antibodies
Applications:	IHC, WB
Recommended Dilution:	<b>Western blot:</b> 1/500-1/1000. <b>Immunohistochemistry:</b> 1/50-1/200.
Reactivity:	Human, Mouse, Rat
Host:	Rabbit
Clonality:	Polyclonal
Immunogen:	Synthetic peptide, corresponding to amino acids 870-913 of Human GABAB R1.
Specificity:	This antibody detects endogenous levels of GABA-B Receptor protein. (region surrounding Ile902)
Formulation:	Phosphate buffered saline (PBS), pH 7.2. State: Aff - Purified State: Liquid purified Ig fraction (> 95% pure by SDS-PAGE). Preservative: 0.05% Sodium azide
Concentration:	1.0 mg/ml
Purification:	Affinity Chromatography using epitope-specific immunogen.
Conjugation:	Unconjugated
Storage:	Store undiluted at 2-8°C for one month or (in aliquots) at -20°C for longer. Avoid repeated freezing and thawing.
Stability:	Shelf life: one year from despatch.
Predicted Protein Size:	~ 110 kDa
Gene Name:	gamma-aminobutyric acid type B receptor subunit 1
Database Link:	<a href="#">Entrez Gene 2550 Human</a> <a href="#">Q9UBS5</a>



[View online »](#)

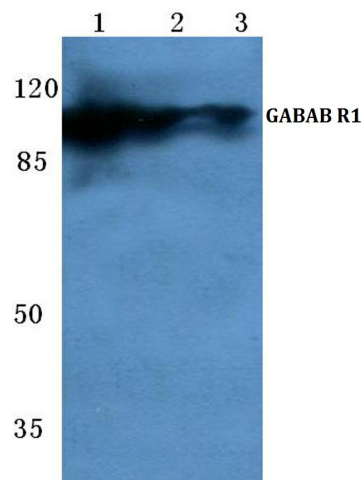
**Background:**

GAD-65 and GAD-67, glutamate decarboxylases of 65 kDa and 67 kDa, respectively, function to catalyze the production of GABA (gamma-aminobutyric acid). In the central nervous system GABA (gamma-aminobutyric acid) functions as the main inhibitory transmitter by increasing a Cl<sup>-</sup> conductance that inhibits neuronal firing. GABA has been shown to activate both ionotropic (GABAA) and metabotropic (GABAB) receptors as well as a third class of receptors called GABAC.

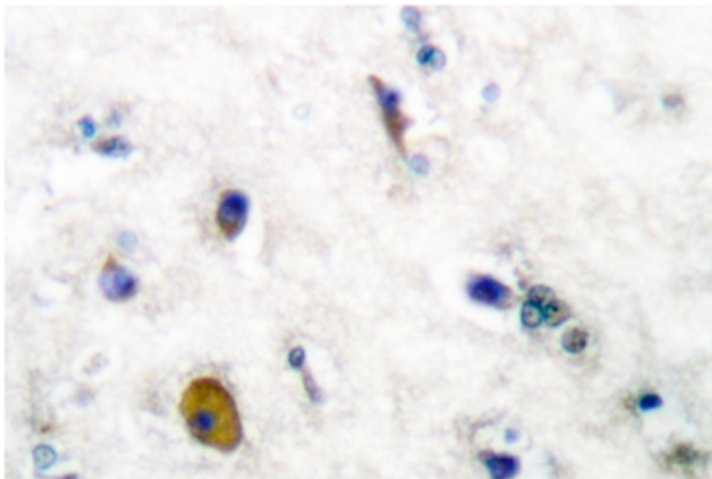
The inhibitory neurotransmitter, GABA, acts through two ligand-gated channels, GABA<sub>A</sub> and GABA<sub>C</sub> receptors and GABA<sub>B</sub>, the latter of which acts through a G protein mechanism. GABAB<sub>R1</sub> is one of two G protein-coupled receptors for GABA<sub>B</sub> that acts as a heteromeric assembly with GABAB<sub>R2</sub>.

**Synonyms:**

GABA-B receptor 1, GABA-B-R1, GABA-BR1, GABABR1, Gb1, GPRC3A

**Product images:**

Western blot (WB) analysis of GABAB R1 antibody at 1/500 dilution. Lane 1: HEK293T cell lysate. Lane 2: Mouse heart tissue lysate. Lane 3: Rat heart tissue lysate.



Immunohistochemistry (IHC) analysis of GABA-B Receptor antibody in paraffin-embedded human brain tissue.