

## Product datasheet for **AP06125PU-M**

### c Fos (FOS) Rabbit Polyclonal Antibody

#### Product data:

Product Type:	Primary Antibodies
Applications:	IHC, WB
Recommended Dilution:	<b>Western blot:</b> 1/500 - 1/1000. <b>Immunohistochemistry on paraffin sections:</b> 1/50 - 1/200.
Reactivity:	Human, Mouse, Rat
Host:	Rabbit
Clonality:	Polyclonal
Immunogen:	Synthetic peptide, corresponding to amino acids 1-50 of Human c-Fos.
Specificity:	This antibody detects endogenous levels of Fos protein. (region surrounding Phe3)
Formulation:	Phosphate buffered saline (PBS), pH 7.2. State: Aff - Purified State: Liquid purified Ig fraction Preservative: 0.05% sodium azide
Concentration:	1.0 mg/ml
Purification:	Affinity-chromatography using epitope-specific immunogen and the purity is > 95% (by SDS-PAGE).
Conjugation:	Unconjugated
Storage:	Store undiluted at 2-8°C for one month or (in aliquots) at -20°C for longer. Avoid repeated freezing and thawing.
Stability:	Shelf life: one year from despatch.
Gene Name:	Fos proto-oncogene, AP-1 transcription factor subunit
Database Link:	<a href="#">Entrez Gene 2353 Human P01100</a>

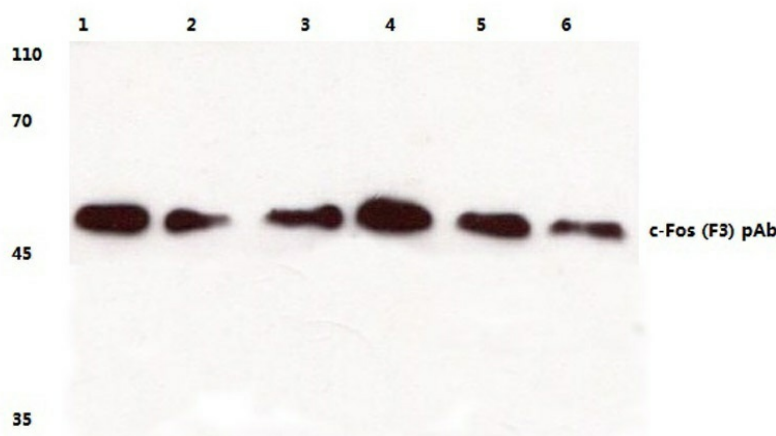
[View online »](#)

**Background:**

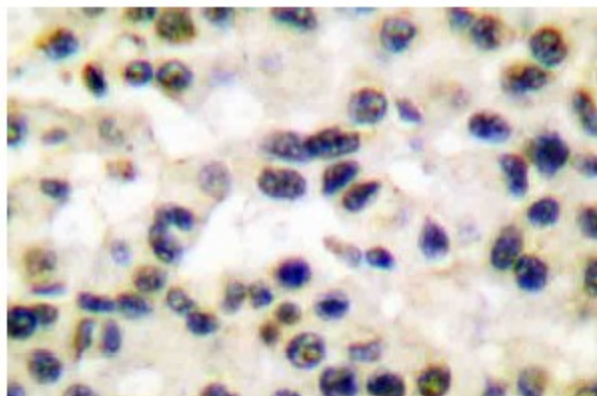
The c-Fos oncogene was initially identified as the transforming gene of two independent murine osteosarcoma virus isolates and an avian nephroblastoma virus. The cellular homolog, c-Fos, encodes a nuclear phosphoprotein that is rapidly and transiently induced by a variety of agents and functions as a transcriptional regulator for several genes. In contrast to c-Jun proteins, which form homo- and heterodimers which bind to specific DNA TPA response elements (TREs), c-Fos proteins are only active as heterodimers with members of the Jun gene family. Murine Fos B encodes a nuclear protein of 338 amino acids which has 70% homology with c-Fos, exhibits similar kinetics of expression as c-Fos and forms heterodimers with both c-Jun and Jun B, which bind to TRE DNA response elements. Functional homologs of c-Fos and Fos B include Fra-1 and Fra-2 genes.

**Synonyms:**

FOS, G0S7

**Product images:**


Western blot (WB) analysis of c-Fos antibody at 1/500 dilution Lane 1: Hela whole cell lysate Lane 2: Mouse brain tissue lysate Lane 3: Mouse herat tissue lysate Lane 5: Rat kidney tissue lysate Lane 6: Rat brain tissue lysate



Immunohistochemistry (IHC) analyzes of Fos antibody in paraffin-embedded human breast carcinoma tissue.