

## Product datasheet for **AP06123PU-N**

### Filamin A (FLNA) Rabbit Polyclonal Antibody

#### Product data:

Product Type:	Primary Antibodies
Applications:	IHC, WB
Recommended Dilution:	<b>Western blot:</b> 1/500-1/1000. <b>Immunohistochemistry on Paraffin Sections:</b> 1/50-1/200.
Reactivity:	Human, Mouse, Rat
Host:	Rabbit
Clonality:	Polyclonal
Immunogen:	Synthetic peptide, corresponding to amino acids 2100-2200 of Human Filamin 1.
Specificity:	This antibody detects endogenous levels of Filamin A protein. (region surrounding Arg5146)
Formulation:	Phosphate buffered saline (PBS), pH~7.2 State: Aff - Purified State: Liquid purified Ig fraction (> 95% pure by SDS-PAGE) Preservative: 0.05% Sodium Azide
Concentration:	1.0 mg/ml
Purification:	Affinity Chromatography using epitope-specific immunogen
Conjugation:	Unconjugated
Storage:	Store undiluted at 2-8°C for one month or (in aliquots) at -20°C for longer. Avoid repeated freezing and thawing.
Stability:	Shelf life: one year from despatch.
Predicted Protein Size:	~280 kDa
Gene Name:	filamin A
Database Link:	<a href="#">Entrez Gene 2316 Human P21333</a>



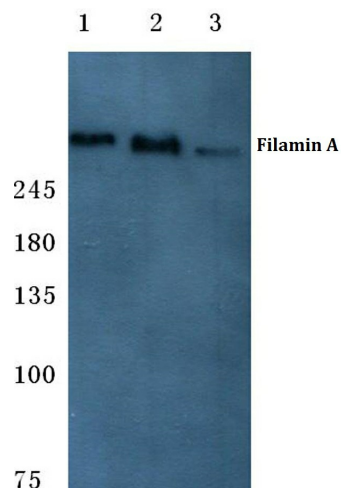
[View online »](#)

**Background:**

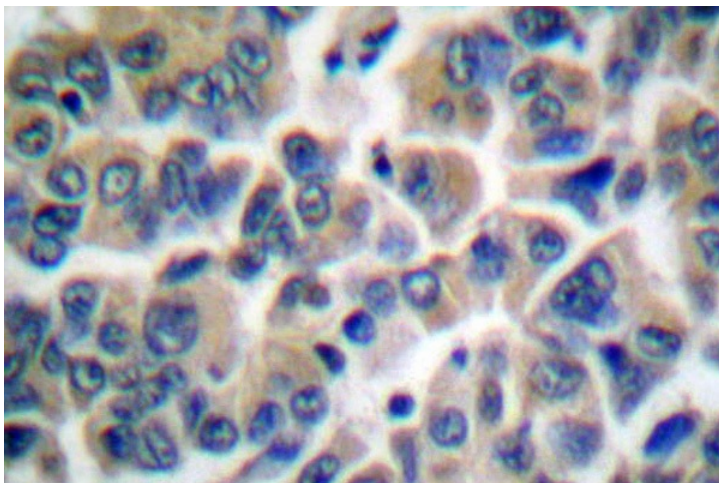
Caldesmon, Filamin 1, nebulin and villin are differentially expressed and regulated Actin binding proteins. Both muscular (CDh) and non-muscular (CDI) forms of caldesmon have been identified and each has been shown to bind to Actin as well as to calmodulin and Myosin. CDh is expressed predominantly on thin filaments in smooth muscle, whereas CDI is widely expressed in nonmuscle tissues and cells. Filamin 1, which is ubiquitously expressed and exists as a homodimer, functions to crosslink Actin to filaments. Nebulin is a large filamentous protein specific to muscle tissue that may function as a ruler for filament length. Several isoforms of nebulin, ranging from 700 to 900 kDa, are produced by alternative exon usage. Villin is Ca<sup>2+</sup>-regulated and is the major structural component of the brush border of absorptive cells.

**Synonyms:**

Alpha-filamin, Filamin-1, Non-muscle filamin, FLNA, FLN, FLN1

**Product images:**


Western blot (WB) analysis of Filamin 1 antibody at 1/500 dilution Lane 1:HEK293T whole cell lysate treated with EGF Lane 2:sp2/0 whole cell lysate treated with EGF Lane 3:Rat heart tissue lysate



Immunohistochemistry analysis of Filamin A Antibody in paraffin-embedded human breast carcinoma tissue.