

## Product datasheet for **AP06121PU-S**

### FHIT Rabbit Polyclonal Antibody

#### Product data:

Product Type:	Primary Antibodies
Applications:	IF, IHC, WB
Recommended Dilution:	<b>Western blot:</b> 1/500-1/1000. <b>Immunohistochemistry on paraffin sections:</b> 1/50-1/200. <b>Immunofluorescence:</b> 1/50-1/200.
Reactivity:	Human
Host:	Rabbit
Clonality:	Polyclonal
Immunogen:	Synthetic peptide, corresponding to amino acids 100-150 of Human FHIT.
Specificity:	This antibody detects endogenous levels of FHIT protein. (region surrounding Glu116)
Formulation:	Phosphate buffered saline (PBS), pH 7.2. State: Aff - Purified State: Liquid purified Ig fraction (> 95% pure by SDS-PAGE) Preservative: 0.05% Sodium azide
Concentration:	1.0 mg/ml
Purification:	Affinity-chromatography using epitope-specific immunogen and the purity is > 95% (by SDS-PAGE)
Conjugation:	Unconjugated
Storage:	Store undiluted at 2-8°C for one month or (in aliquots) at -20°C for longer. Avoid repeated freezing and thawing.
Stability:	Shelf life: one year from despatch.
Predicted Protein Size:	~ 17 kDa
Gene Name:	fragile histidine triad
Database Link:	<a href="#">Entrez Gene 2272 Human P49789</a>



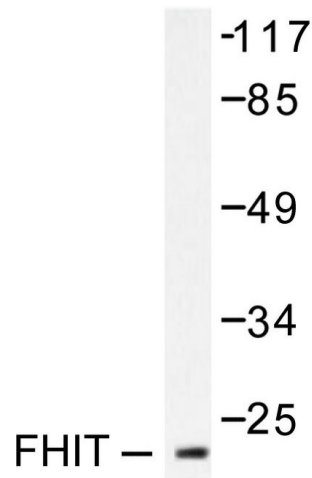
[View online »](#)

**Background:**

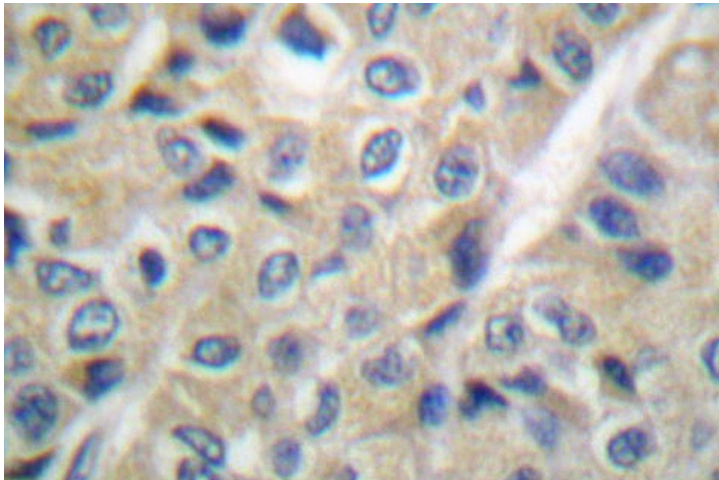
FHIT, a candidate tumor suppressor gene, contains the FRA3B common fragile site and is highly susceptible to carcinogen damage. The pattern of mutational inactivation seen with the FHIT gene is unique compared with other known tumor suppressors. FHIT gene structure and expression have been shown to be altered in esophageal, head, neck, lung, gastric, breast, and cervical carcinomas. It has been demonstrated that FHIT exon loss is associated with smoking duration or asbestos exposure. The FHIT protein is a member of the histidine triad (HIT) superfamily and functions as a dinucleoside 5',5'''-P<sub>1</sub>,P<sub>3</sub>-triphosphate hydrolase.

**Synonyms:**

Dinucleosidetriphosphatase, AP3Aase

**Product images:**


Western blot (WB) analysis of FHIT antibody in extracts from A549 cells.



Immunohistochemistry (IHC) analyzes of FHIT antibody in paraffin-embedded human breast carcinoma tissue.