

Product datasheet for **AP06116PU-N**

Fibroblast activation protein, alpha (FAP) Rabbit Polyclonal Antibody

Product data:

Product Type:	Primary Antibodies
Applications:	IHC, WB
Recommended Dilution:	Western blot: 1/500-1/1000. Immunohistochemistry on Paraffin sections: 1/50-1/200.
Reactivity:	Human, Mouse, Rat
Host:	Rabbit
Clonality:	Polyclonal
Immunogen:	Synthetic peptide, corresponding to amino acids 350-400 of Human Seprase.
Specificity:	This antibody detects endogenous levels of Seprase / FAP protein (region surrounding Lys366).
Formulation:	Phosphate buffered saline (PBS), pH 7.2. State: Aff - Purified State: Liquid purified Ig fraction (> 95% pure by SDS-PAGE). Preservative: 0.05% Sodium azide
Concentration:	1.0 mg/ml
Purification:	Affinity chromatography using epitope-specific immunogen.
Conjugation:	Unconjugated
Storage:	Store undiluted at 2-8°C for one month or (in aliquots) at -20°C for longer. Avoid repeated freezing and thawing.
Stability:	Shelf life: one year from despatch.
Predicted Protein Size:	~88 kDa
Gene Name:	fibroblast activation protein alpha
Database Link:	Entrez Gene 2191 Human Q12884



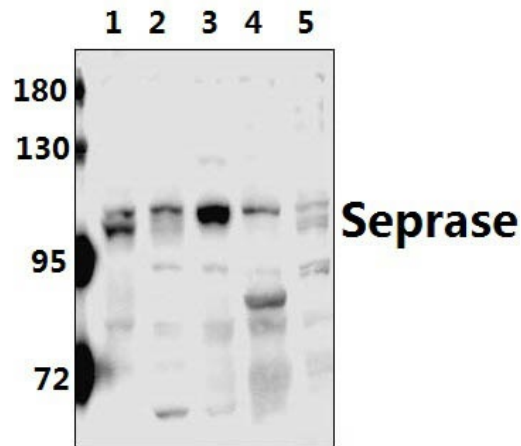
[View online »](#)

Background:

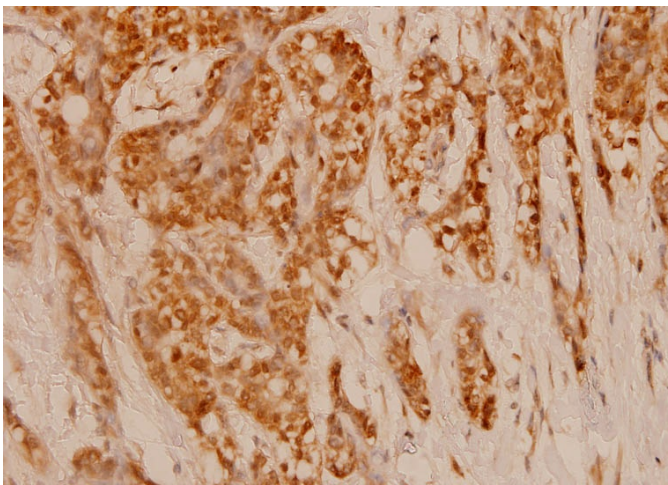
Fibroblast Activation Protein alpha subunit (FAPa or FAP, alpha) is a integral membrane gelatinase belonging to the serine protease family. FAPa is the alpha subunit and DPP4 (CD26) the beta subunit of a heterodimeric membrane-bound proteinase complex also known as 170 kDa Melanoma Membrane Gelatinase, Integral Membrane Serine Proteinase and Seprase, which also has subunit molecular weight as 88 kDa, 95 kDa, 97kDa. Some cells make only FAPa homodimers, some only DPP4 homodimers. The monomer is inactive. FAP, alpha is selectively expressed in reactive stromal fibroblasts of epithelial cancers, granulation tissue of healing wounds, and malignant cells of bone and soft tissue sarcomas. This protein is thought to be involved in the control of fibroblast growth or epithelial-mesenchymal interactions during development, tissue repair, and epithelial carcinogenesis.

Synonyms:

Fibroblast activation protein alpha

Product images:


Western blot (WB) analysis of Seprase (K366) pAb at 1:500 dilution. Lane 1:U-251MG lysate (40ug); Lane 2:U-87MG; lysate (40ug); Lane 3:C6 lysate (40ug); Lane 4:MEF



Immunohistochemistry (IHC) analyzes of Seprase (K366) pAb in paraffin-embedded human breast carcinoma tissue at 1:100.