

## Product datasheet for **AP06115PU-N**

### FANCD2 Rabbit Polyclonal Antibody

#### Product data:

Product Type:	Primary Antibodies
Applications:	IHC, WB
Recommended Dilution:	<b>Western blot:</b> 1/500-1/1000. <b>Immunohistochemistry on Paraffin sections:</b> 1/50-1/200.
Reactivity:	Human, Mouse, Rat
Host:	Rabbit
Clonality:	Polyclonal
Immunogen:	Synthetic peptide, corresponding to amino acids 182-234 of Human FANCD2.
Specificity:	This antibody detects endogenous levels of FANCD2 protein (region surrounding Pro216).
Formulation:	Phosphate buffered saline (PBS), pH 7.2. State: Aff - Purified State: Liquid purified Ig fraction Preservative: 0.05% Sodium azide
Concentration:	1.0 mg/ml
Purification:	Affinity-chromatography using epitope-specific immunogen (> 95% pure by SDS-PAGE).
Conjugation:	Unconjugated
Storage:	Store undiluted at 2-8°C for one month or (in aliquots) at -20°C for longer. Avoid repeated freezing and thawing.
Stability:	Shelf life: one year from despatch.
Predicted Protein Size:	~166 kDa
Gene Name:	Fanconi anemia complementation group D2
Database Link:	<a href="#">Entrez Gene 2177 Human Q9BXW9</a>



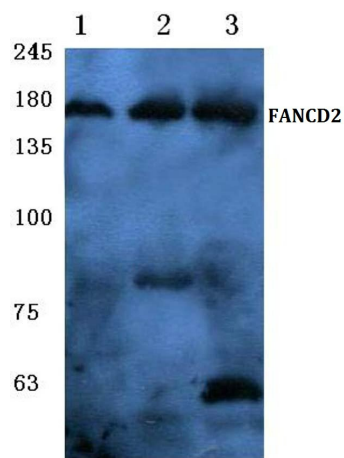
[View online »](#)

**Background:**

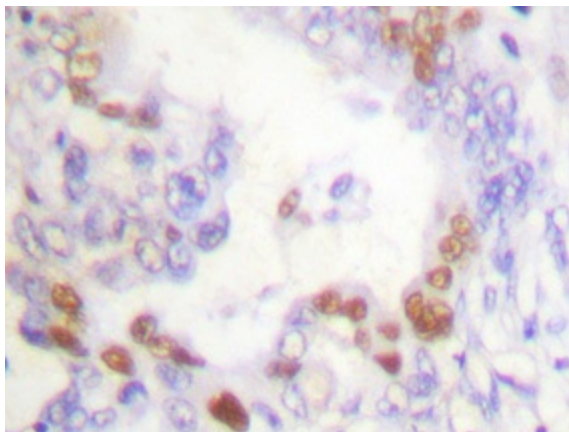
The Fanconi anemia (FA) proteins lack sequence homologies or motifs that could point to a molecular function. Phosphorylation of FANCD2 (Fanconi anemia complementation group 2) proteins are thought to be important for the function of the FA pathway. Several FA proteins, including FANCA, FANCC, FANCF, and FANCG, interact in a nuclear complex, and this complex is required for the activation (monoubiquitination) of the downstream FANCD2 protein. When monoubiquitinated, the FANCD2 protein co-localizes with the breast cancer susceptibility protein BRCA1 in DNA damage induced foci. In male meiosis, FANCD2 also co-localizes with BRCA1 at synaptonemal complexes. The human FANCD2 gene maps to chromosome 3p25.3, contains 44 exons and encodes a 1,451 amino acid nuclear protein that exists as two protein isoforms.

**Synonyms:**

Fanconi anemia group D2 protein, FANCD2, FANCD

**Product images:**


Western blot (WB) analysis of FANCD2 antibody at 1/500 dilution Lane 1: Hela cell lysate Lane 2: SP2/O cell lysate Lane 3: Mouse liver tissue lysate



Immunohistochemical analysis in paraffin-embedded human breast carcinoma tissue using FANCD2 antibody.