

Product datasheet for **AP06110PU-N**

Estrogen Receptor 1 (ESR1) Rabbit Polyclonal Antibody

Product data:

Product Type:	Primary Antibodies
Applications:	IHC, WB
Recommended Dilution:	Western blot: 1/500-1/1000. Immunohistochemistry on Paraffin sections: 1/50-1/200.
Reactivity:	Human, Mouse
Host:	Rabbit
Clonality:	Polyclonal
Immunogen:	Synthetic peptide, corresponding to amino acids 81-130 of Human ER α .
Specificity:	This antibody detects endogenous levels of Estrogen receptor alpha (region surrounding His112).
Formulation:	Phosphate buffered saline (PBS), pH 7.2. State: Aff - Purified State: Liquid purified Ig fraction Preservative: 0.05% Sodium azide
Concentration:	1.0 mg/ml
Purification:	Affinity chromatography using epitope-specific immunogen (> 95% pure by SDS-PAGE).
Conjugation:	Unconjugated
Storage:	Store undiluted at 2-8°C for one month or (in aliquots) at -20°C for longer. Avoid repeated freezing and thawing.
Stability:	Shelf life: one year from despatch.
Predicted Protein Size:	~66 kDa
Gene Name:	estrogen receptor 1
Database Link:	Entrez Gene 2099 Human P03372



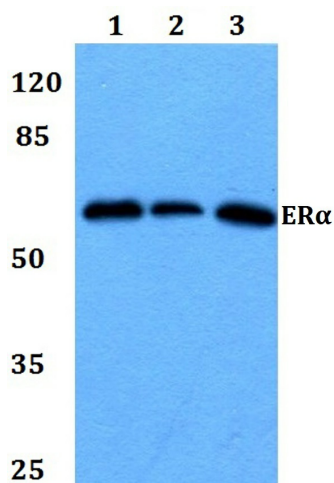
[View online »](#)

Background:

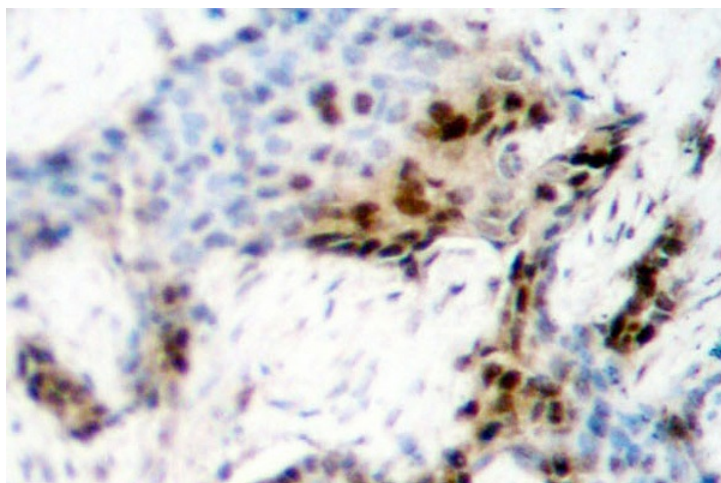
Estrogen receptors (ER) are members of the steroid/thyroid hormone receptor superfamily of ligand-activated transcription factors. Estrogen receptors, including ER α and ER β , contain DNA binding and ligand binding domains and are critically involved in regulating the normal function of reproductive tissues. ER α and ER β have been shown to be differentially activated by various ligands. Receptor-ligand interactions trigger a cascade of events, including dissociation from heat shock proteins, receptor dimerization, phosphorylation and the association of the hormone activated receptor with specific regulatory elements in target genes. Evidence suggests that ER α and ER β may be regulated by distinct mechanisms even though they share many functional characteristics.

Synonyms:

ER alpha, Estradiol receptor, ESR1, ESR, NR3A1

Product images:

Western blot (WB) analysis of ER α antibody at 1/500 dilution Lane 1: HEK293T whole cell lysate Lane 2: Raw264.7 whole cell lysate Lane 3: H9C2 whole cell lysate



Immunohistochemical analysis in paraffin-embedded human breast carcinoma tissue using Estrogen receptor alpha antibody (No.).