

Product datasheet for **AP06108PU-M**

Estrogen Receptor 1 (ESR1) Rabbit Polyclonal Antibody

Product data:

Product Type:	Primary Antibodies
Applications:	ELISA, IHC, WB
Recommended Dilution:	ELISA: 1/20000~1/40000. Western blot: 1/500~1/1000. Immunohistochemistry on Paraffin Sections: 1/50~1/200.
Reactivity:	Human, Mouse, Rat
Host:	Rabbit
Clonality:	Polyclonal
Immunogen:	Synthetic peptide, corresponding to amino acids 61-110 of Human ER α .
Specificity:	This antibody detects endogenous levels of Estrogen Receptor-alpha protein.
Formulation:	Phosphate buffered saline (PBS) with 0.05% Sodium azide, approx. pH 7.2. State: Aff - Purified State: Liquid purified Ig fraction (> 95% pure by SDS-PAGE).
Concentration:	1.0 mg/ml
Purification:	Affinity Chromatography using epitope-specific immunogen.
Conjugation:	Unconjugated
Storage:	Store undiluted at 2-8°C for one month or (in aliquots) at -20°C for longer. Avoid repeated freezing and thawing.
Stability:	Shelf life: one year from despatch.
Predicted Protein Size:	~66 kDa
Gene Name:	estrogen receptor 1
Database Link:	Entrez Gene 2099 Human P03372



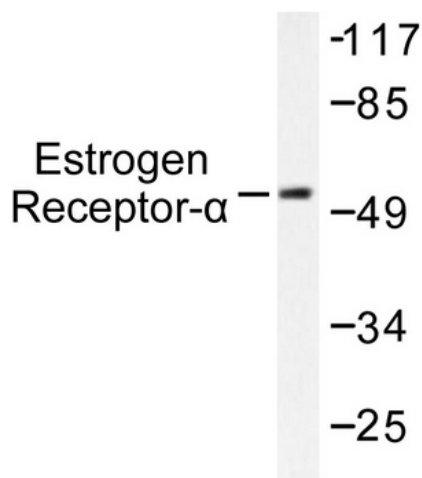
[View online »](#)

Background:

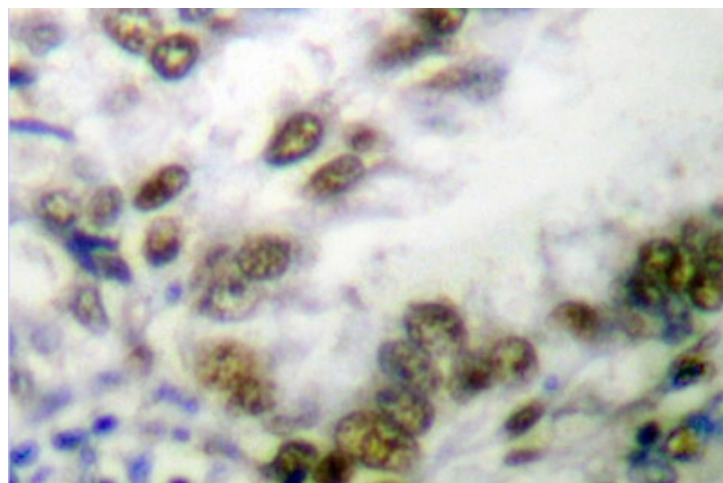
Estrogen receptors (ER) are members of the steroid/thyroid hormone receptor superfamily of ligand-activated transcription factors. Estrogen receptors, including ER α and ER β , contain DNA binding and ligand binding domains and are critically involved in regulating the normal function of reproductive tissues. ER α and ER β have been shown to be differentially activated by various ligands. Receptor-ligand interactions trigger a cascade of events, including dissociation from heat shock proteins, receptor dimerization, phosphorylation and the association of the hormone activated receptor with specific regulatory elements in target genes. Evidence suggests that ER α and ER β may be regulated by distinct mechanisms even though they share many functional characteristics

Synonyms:

ER alpha, Estradiol receptor, ESR1, ESR, NR3A1

Product images:


Western blot (WB) analysis of Estrogen Receptor-alpha antibody in extracts from 293 cells treated with Forskolin.



Immunohistochemistry (IHC) analysis of Estrogen Receptor-alpha antibody in paraffin-embedded human breast carcinoma tissue.