

## Product datasheet for **AP06107PU-M**

### **ERK1 (MAPK3) Rabbit Polyclonal Antibody**

#### **Product data:**

Product Type:	Primary Antibodies
Applications:	IHC, WB
Recommended Dilution:	<b>Western blot:</b> 1/500-1/1000. <b>Immunohistochemistry on Paraffin sections:</b> 1/50-1/200.
Reactivity:	Human, Mouse, Rat
Host:	Rabbit
Clonality:	Polyclonal
Immunogen:	Synthetic peptide, corresponding to amino acids 320-370 of Human ERK1.
Specificity:	This antibody detects endogenous levels of MAPK3 / ERK1 protein (region surrounding Leu352).
Formulation:	Phosphate buffered saline (PBS), pH 7.2. State: Aff - Purified State: Liquid purified Ig fraction (> 95% pure by SDS-PAGE) Preservative: 0.05% Sodium Azide
Concentration:	1.0 mg/ml
Purification:	Affinity Chromatography using epitope-specific immunogen
Conjugation:	Unconjugated
Storage:	Store undiluted at 2-8°C for one month or (in aliquots) at -20°C for longer. Avoid repeated freezing and thawing.
Stability:	Shelf life: one year from despatch.
Predicted Protein Size:	~42,44 kDa
Gene Name:	mitogen-activated protein kinase 3
Database Link:	<u><a href="#">Entrez Gene 5595 Human P27361</a></u>



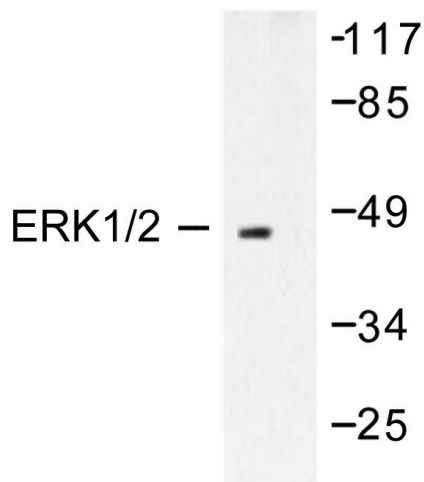
[View online »](#)

**Background:**

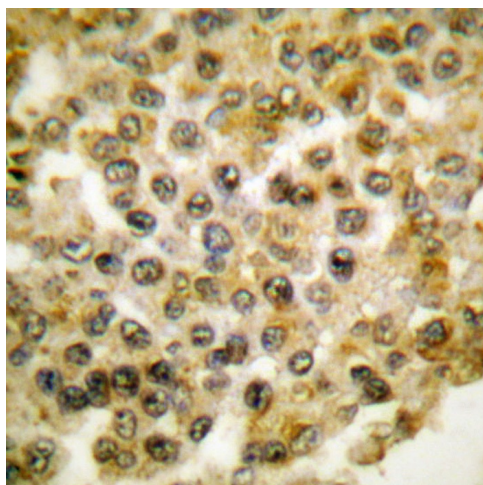
The activation of signal transduction pathways by growth factors, hormones and neurotransmitters is mediated through two closely related MAP kinases, p44 and p42, designated extracellular-signal related kinase 1 (ERK 1) and ERK 2, respectively. ERK proteins are regulated by dual phosphorylation at specific tyrosine and Threonine sites mapping within a characteristic Thr- Glu-Tyr motif. Phosphorylation at both the Thr and Tyr residues is required for full enzymatic activation. In response to activation, MAP kinases phos-phorylate downstream components on Serine and Threonine. Upstream MAP kinase regulators include MAP kinase kinase (MEK), MEK kinase and Raf-1. The ERK family has three additional members: ERK 3, ERK 5 and ERK 6.

**Synonyms:**

MAP kinase 3, MAPK 3, ERK-1, ERT2, p44-MAPK, p44-ERK1, PRKM3

**Product images:**


Western blot (WB) in extracts from COLO205 cells using MAPK3 / ERK1 antibody.



Immunohistochemical (IHC) analysis in paraffin-embedded human breast carcinoma tissue using MAPK3 / ERK1 antibody.