

Product datasheet for **AP06106PU-M**

ERCC1 Rabbit Polyclonal Antibody

Product data:

Product Type:	Primary Antibodies
Applications:	IHC, WB
Recommended Dilution:	Western blot: 1/500-1/1000. Immunohistochemistry on paraffin sections 1/50-1/200.
Reactivity:	Human, Mouse
Host:	Rabbit
Clonality:	Polyclonal
Immunogen:	Synthetic peptide, corresponding to amino acids 141-190 of Human ERCC1.
Specificity:	This antibody detects endogenous levels of ERCC1 protein. (region surrounding Val171)
Formulation:	Phosphate buffered saline (PBS), pH~7.2 State: Aff - Purified State: Liquid purified Ig fraction (> 95% pure by SDS-PAGE) Preservative: 0.05% Sodium Azide
Concentration:	1.0 mg/ml
Purification:	Affinity Chromatography using epitope-specific immunogen
Conjugation:	Unconjugated
Storage:	Store undiluted at 2-8°C for one month or (in aliquots) at -20°C for longer. Avoid repeated freezing and thawing.
Stability:	Shelf life: one year from despatch.
Predicted Protein Size:	~36 kDa
Gene Name:	ERCC excision repair 1, endonuclease non-catalytic subunit
Database Link:	Entrez Gene 2067 Human P07992

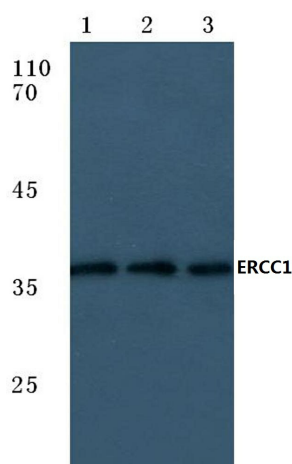
[View online »](#)

Background:

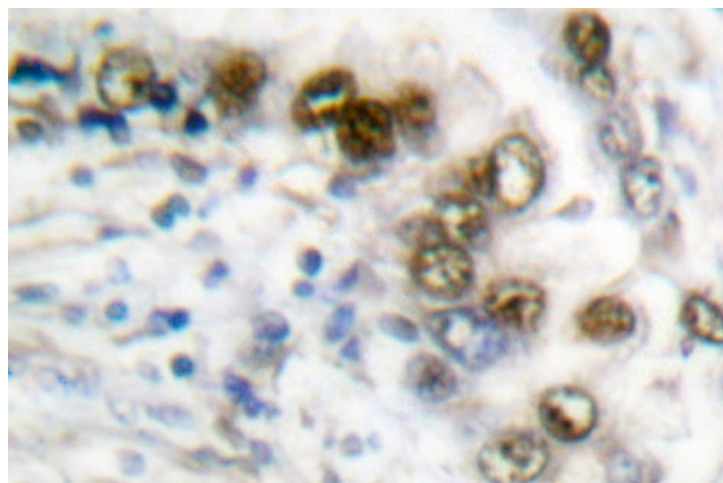
Xeroderma pigmentosum (XP) is an autosomal recessive disorder characterized by a genetic predisposition to sunlight-induced skin cancer; it is commonly due to deficiencies in DNA repair enzymes. The most frequent mutations are found in the XP genes from group A through G and group V, which encode for nucleotide excision repair proteins. XPF, which is also designated ERCC4 or ERCC11, associates directly with the excision repair cross-complementing 1 (ERCC1) factor. ERCC1, a functional homolog of Rad10 in *S. cerevisiae*, is a component of a structure-specific endonuclease that is responsible for 5' incisions during DNA repair. The ERCC1-XPF endonuclease preferentially cleaves one strand of DNA between duplex and single-stranded regions near borders of the stem-loop structure and, thereby, contributes to the initial steps of the nucleotide excision repair process.

Synonyms:

DNA excision repair protein ERCC-1, COFS4, UV20

Product images:


Western blot (WB) analysis of ERCC1 antibody at 1/500 dilution Lane 1 : MCF-7 whole cell lysate
Lane 2 : Mouse liver tissue lysate Lane 3 : Rat kidney tissue lysate



Immunohistochemistry (IHC) analysis of ERCC1 antibody in paraffin-embedded human lung carcinoma tissue.