

Product datasheet for **AP06103PU-N**

Endostatin (COL18A1) Rabbit Polyclonal Antibody

Product data:

Product Type:	Primary Antibodies
Applications:	IHC, WB
Recommended Dilution:	Western blot: 1/500-1/1000. Immunohistochemistry on Paraffin Sections: 1/50-1/200.
Reactivity:	Human, Mouse
Host:	Rabbit
Clonality:	Polyclonal
Immunogen:	Synthetic peptide, corresponding to amino acids 300-350 of Human COL18A1.
Specificity:	This antibody detects endogenous levels of Collagen type XVIII alpha 1 chain (region surrounding Glu1322).
Formulation:	Phosphate buffered saline (PBS), pH 7.2. State: Aff - Purified State: Liquid purified Ig fraction Preservative: 0.05% Sodium azide
Concentration:	1.0 mg/ml
Purification:	Affinity chromatography using epitope-specific immunogen (> 95% pure by SDS-PAGE)
Conjugation:	Unconjugated
Storage:	Store undiluted at 2-8°C for one month or (in aliquots) at -20°C for longer. Avoid repeated freezing and thawing.
Stability:	Shelf life: one year from despatch.
Predicted Protein Size:	~ 179 kDa
Gene Name:	collagen type XVIII alpha 1 chain
Database Link:	Entrez Gene 12822 Mouse Entrez Gene 80781 Human P39060



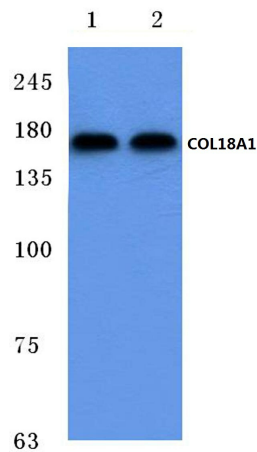
[View online »](#)

Background:

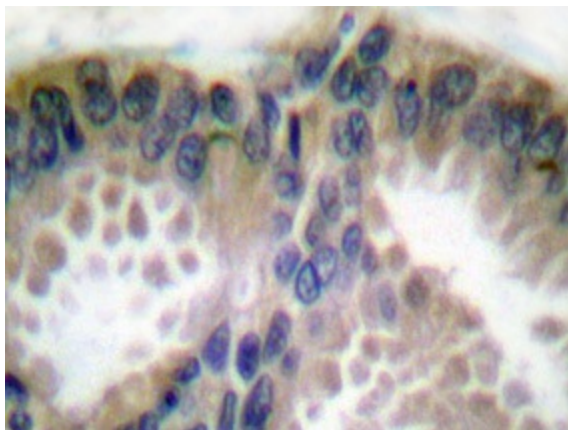
The extensive family of COL gene products (collagens) is composed of several chain types, including fibril-forming interstitial collagens (types I, II, III and V) and basement membrane collagens (type IV), each type containing multiple isoforms. Collagens are fibrous, extracellular matrix proteins with high tensile strength and are the major components of connective tissue, such as tendons and cartilage. All collagens contain a triple helix domain and frequently show lateral self-association in order to form complex connective tissues. Several collagens also play a role in cell adhesion, important for maintaining normal tissue architecture and function.

Synonyms:

COL18A1, Endostatin, KNO1

Product images:


Western blot (WB) analysis of COL18A1 antibody at 1/500 dilution Lane 1:MCF-7 whole cell lysate
Lane 2:PC12 whole cell lysate



Immunohistochemical (IHC) analysis in paraffin-embedded human lung carcinoma tissue using Collagen type XVIII alpha 1 chain antibody.