

## Product datasheet for **AP06098PU-M**

### EGFR Rabbit Polyclonal Antibody

#### Product data:

Product Type:	Primary Antibodies
Applications:	ELISA, IHC, WB
Recommended Dilution:	<b>Western blot:</b> 1/500-1/1000. <b>Immunohistochemistry on Paraffin sections:</b> 1/50-1/200.
Reactivity:	Human, Mouse, Rat
Host:	Rabbit
Clonality:	Polyclonal
Specificity:	This antibody detects endogenous levels of Actin-pan protein (region surrounding His672).
Formulation:	Phosphate buffered saline (PBS), pH 7.2. State: Aff - Purified State: Liquid purified Ig fraction Preservative: 0.05% Sodium azide
Concentration:	1.0 mg/ml
Purification:	Affinity chromatography using epitope-specific immunogen (> 95% pure by SDS-PAGE).
Conjugation:	Unconjugated
Storage:	Store undiluted at 2-8°C for one month or (in aliquots) at -20°C for longer. Avoid repeated freezing and thawing.
Stability:	Shelf life: one year from despatch.
Predicted Protein Size:	~134, 175 kDa
Gene Name:	epidermal growth factor receptor
Database Link:	<a href="#">Entrez Gene 1956 Human P00533</a>

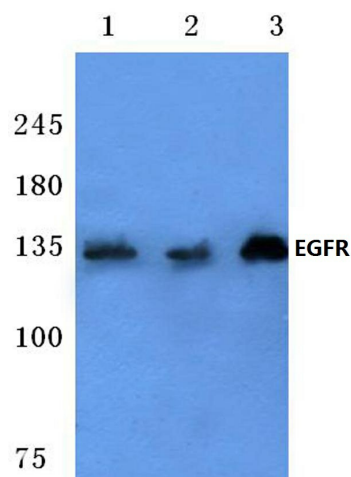
[View online »](#)

**Background:**

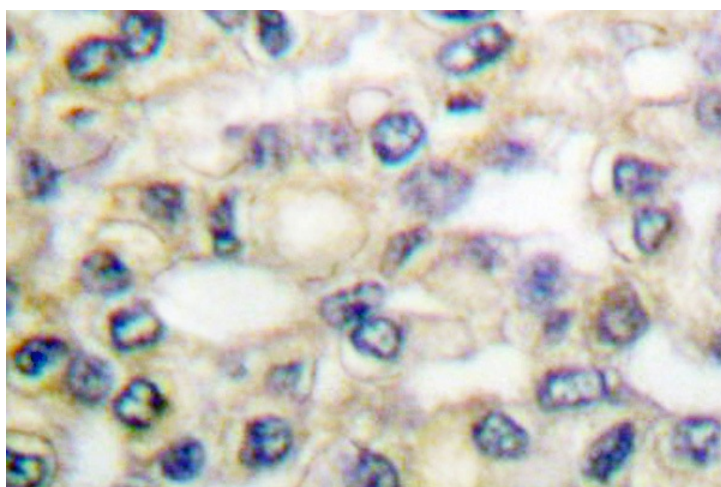
The EGF receptor family comprises several related receptor tyrosine kinases that are frequently overexpressed in a variety of carcinomas. Members of this receptor family include EGFR (HER1), Neu (ErbB-2, HER2), ErbB-3 (HER3) and ErbB-4 (HER4), which form either homodimers or heterodimers upon ligand binding. Exons in the EGFR gene product are frequently either deleted or duplicated to produce deletion mutants (DM) or tandem duplication mutants (TDM), respectively, which are detected at various molecular weights. EGFR binds several ligands including epidermal growth factor (EGF), transforming growth factor  $\alpha$  (TGF $\alpha$ ), Amphiregulin and heparin binding-EGF (HB-EGF). Ligand binding promotes the internalization of EGFR via Clathrin-coated pits and its subsequent degradation in response to its intrinsic tyrosine kinase. EGFR is involved in organ morphogenesis and maintenance and repair of tissues, but upregulation of EGFR is associated with tumor progression. The oncogenic effects of EGFR include initiation of DNA synthesis, enhanced cell growth, invasion and metastasis. Abrogation of EGFR results in cell cycle arrest, apoptosis or dedifferentiation of cancer cells, suggesting that EGFR may be an effective therapeutic target.

**Synonyms:**

Epidermal growth factor receptor, EGF Receptor, erbB-1, c-ErbB-1

**Product images:**


Western blot (WB) analysis of EGFR antibody (Cat.-No.: [AP06098PU-N]) at 1/500 dilution Lane 1:MCF-7 cell lysate Lane 2:Raw264.7 cell lysate Lane 3:PC12 cell lysate



Immunohistochemical analysis in paraffin-embedded human breast carcinoma tissue using EGFR / ERBB1 antibody (Cat.-No. [AP06098PU-N]).