

## Product datasheet for **AP06095PU-N**

### LOC101930123 Rabbit Polyclonal Antibody

#### Product data:

Product Type:	Primary Antibodies
Applications:	IHC, WB
Recommended Dilution:	<b>Western blot:</b> 1/500-1/1000. <b>Immunohistochemistry on Paraffin sections:</b> 1/50-1/200.
Reactivity:	Human, Mouse, Rat
Host:	Rabbit
Clonality:	Polyclonal
Specificity:	This antibody detects endogenous levels of EEF-2 kinase / eEF2K protein (region surrounding Pro360).
Formulation:	Phosphate buffered saline (PBS), pH 7.2. State: Aff - Purified State: Liquid purified Ig fraction Preservative: 15 mM sodium azide
Concentration:	1.0 mg/ml
Purification:	Affinity chromatography using epitope-specific immunogen (> 95% pure by SDS-PAGE).
Conjugation:	Unconjugated
Storage:	Store undiluted at 2-8°C for one month or (in aliquots) at -20°C for longer. Avoid repeated freezing and thawing.
Stability:	Shelf life: one year from despatch.
Predicted Protein Size:	~105 kDa
Database Link:	<a href="#">Entrez Gene 101930123 Human</a> <a href="#">O00418</a>



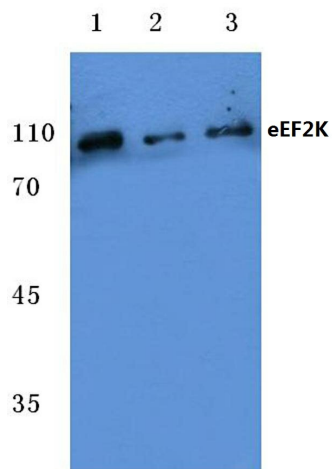
[View online »](#)

**Background:**

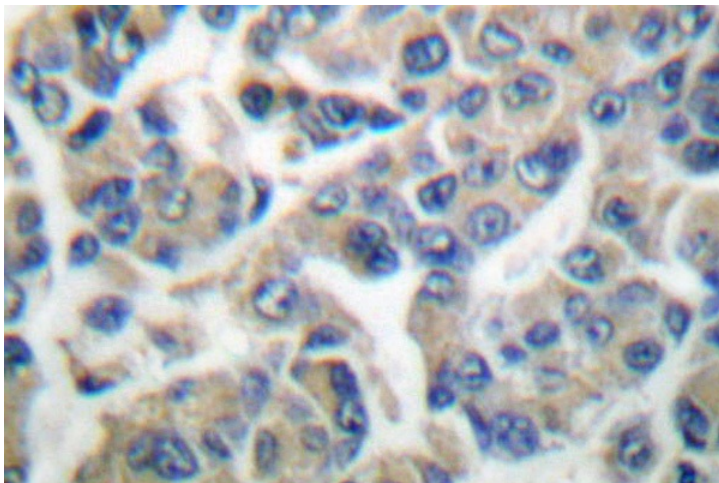
The activity of the purified eukaryotic elongation-factor-2 kinase (eEF2K) is completely dependent on calcium and calmodulin, and autophosphorylation on serine and threonine residues is calcium/calmodulin-dependent. eEF2K is a ubiquitous protein kinase that phosphorylates and inactivates eEF2, and thus can modulate the rate of polypeptide chain elongation during translation. eEF2K is 120 kDa protein that is detected in skeletal muscle extracts and is phosphorylated rapidly by SAPK4, but poorly by p38, p38g, JNK or ERK 2. SAPK4 phosphorylates eEF2K at Ser 359 and Ser 396 in vitro, causing its inactivation. The phosphorylation of eEF2K at Ser 359 is also induced by insulin-like growth factor-1. Ser 359 is in close proximity to Ser 366 and the Ser 366 residue also becomes phosphorylated in response to growth factors. eEF2K is phosphorylated by p70 S6 kinase at Ser 366 and this results in the inactivation of eEF2K, especially at low (micromolar) calcium concentrations.

**Synonyms:**

Elongation factor 2 kinase, EEF2K, EF2K

**Product images:**

Western blot (WB) analysis of eEF2K antibody (Cat.-No.: AP06095PU-N) at 1/500 dilution Lane 1:Hela cell lysate Lane 2:MCF-7 cell lysate Lane 3:Rat kidney tissue lysate



Immunohistochemical analysis in paraffin-embedded human breast carcinoma tissue using EEF-2 kinase antibody (Cat.-No. AP06095PU-N).