

Product datasheet for **AP06093PU-M**

E Cadherin (CDH1) Rabbit Polyclonal Antibody

Product data:

Product Type:	Primary Antibodies
Applications:	IF, IHC, WB
Recommended Dilution:	Western blot: 1/500-1/1000. Immunohistochemistry on Paraffin sections: 1/50-1/200. Immunofluorescence: 1/50-1/200.
Reactivity:	Human
Host:	Rabbit
Clonality:	Polyclonal
Specificity:	This antibody detects endogenous levels of CD324 / Cadherin-1 protein (region surrounding Gly2).
Formulation:	Phosphate buffered saline (PBS), pH 7.2. State: Aff - Purified State: Liquid purified Ig fraction (> 95% pure by SDS-PAGE). Preservative: 0.05% Sodium azide
Concentration:	1.0 mg/ml
Purification:	Affinity chromatography using epitope-specific immunogen.
Conjugation:	Unconjugated
Storage:	Store undiluted at 2-8°C for one month or (in aliquots) at -20°C for longer. Avoid repeated freezing and thawing.
Stability:	Shelf life: One year from despatch.
Predicted Protein Size:	~ 98, 130 kDa
Gene Name:	cadherin 1
Database Link:	Entrez Gene 999 Human P12830

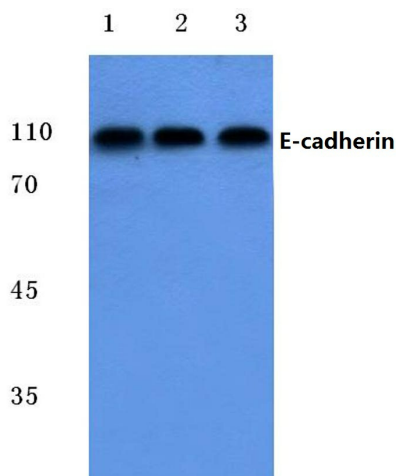
[View online »](#)

Background:

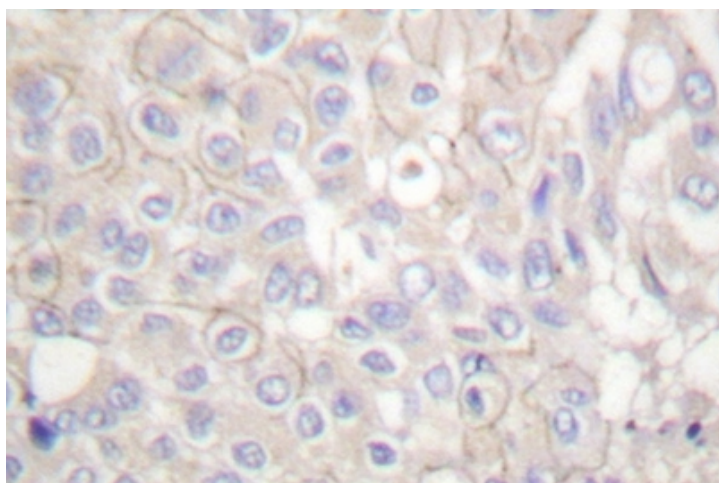
Cadherins comprise a family of Ca²⁺-dependent adhesion molecules that function to mediate cell-cell binding critical to the maintenance of tissue structure and morphogenesis. The classical cadherins, E-, N- and P-cadherin, consist of large extracellular domains characterized by a series of five homologous NH₂ terminal repeats. The most distal of these cadherins is thought to be responsible for binding specificity, transmembrane domains and carboxyterminal intracellular domains. The relatively short intracellular domains interact with a variety of cytoplasmic proteins, such as beta-Catenin, to regulate cadherin function. Members of this family of adhesion proteins include rat cadherin K (and its human homolog, cadherin-6), R-cadherin, B-cadherin, E/P- cadherin and cadherin-5.

Synonyms:

Epithelial cadherin, E-cadherin, Uvomorulin, CAM 120/80, CDH1, CDHE, UVO

Product images:


Western blot (WB) analysis of E-cadherin antibody (Cat.-No.: [AP06093PU-N]) at 1/500 dilution Lane 1:HEK293T cell lysate Lane 2:Mouse kidney tissue lysate Lane 3:Rat kidney tissue lysate



Immunohistochemical analysis in paraffin-embedded human breast carcinoma tissue using CD324 / Cadherin-1 antibody (Cat.-No. [AP06093PU-N]).