

Product datasheet for **AP06092PU-N**

E2F6 Rabbit Polyclonal Antibody

Product data:

Product Type:	Primary Antibodies
Applications:	ELISA, IHC, WB
Recommended Dilution:	Western blot: 1/500-1/1000. Immunohistochemistry on Paraffin sections: 1/50-1/200.
Reactivity:	Human, Mouse, Rat
Host:	Rabbit
Clonality:	Polyclonal
Specificity:	This antibody detects endogenous levels of E2F6 protein (region surrounding Glu170).
Formulation:	Phosphate buffered saline (PBS), pH 7.2. State: Aff - Purified State: Liquid purified Ig fraction Preservative: 0.05% Sodium azide
Concentration:	1.0 mg/ml
Purification:	Affinity chromatography using epitope-specific immunogen (> 95% pure by SDS-PAGE).
Conjugation:	Unconjugated
Storage:	Store undiluted at 2-8°C for one month or (in aliquots) at -20°C for longer. Avoid repeated freezing and thawing.
Stability:	Shelf life: one year from despatch.
Predicted Protein Size:	~31 kDa
Gene Name:	E2F transcription factor 6
Database Link:	Entrez Gene 50496 Mouse Entrez Gene 313978 Rat Entrez Gene 1876 Human O75461



[View online »](#)

Background:

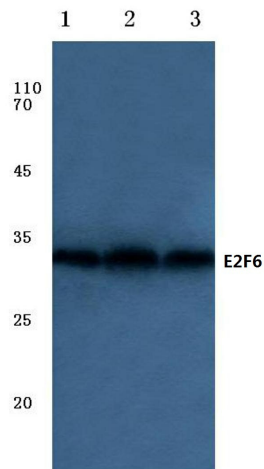
The human retinoblastoma gene product appears to play an important role in the negative regulation of cell proliferation. Functional inactivation of Rb can be mediated either through mutation or as a consequence of interaction with DNA tumor virus encoded proteins. Of all the Rb associations described to date, the identification of a complex between Rb and the transcription factor E2F most directly implicates Rb in regulation of cell proliferation. E2F was originally identified through its role in transcriptional activation of the adenovirus E2 promoter. Sequences homologous to the E2F binding site have been found upstream of a number of genes that encode proteins with putative functions in the G1 and S phases of the cell cycle. E2F-1 is a member of a broader family of transcriptional regulators including E2F-2, E2F-3, E2F-4, E2F-5 and E2F-6, each of which forms heterodimers with a second protein, DP-1, forming an “active” E2F transcriptional regulatory complex.

Synonyms:

E2F-6, MGC111545

Protein Families:

Transcription Factors

Product images:

Western blot (WB) analysis of E2F-6 antibody (Cat.-No.: AP06092PU-N) at 1/500 dilution Lane 1:Hela cell lysate Lane 2:Mouse muscle tissue lysate Lane 3:Rat heart tissue lysate



Immunohistochemical analysis in paraffin-embedded human brain tissue using E2F6 antibody (Cat.-No. AP06092PU-N).