

## Product datasheet for **AP06086PU-S**

### **PARK7 Rabbit Polyclonal Antibody**

#### **Product data:**

Product Type:	Primary Antibodies
Applications:	IF, IHC, WB
Recommended Dilution:	<b>Western blot:</b> 1/500-1/1000. <b>Immunohistochemistry on Paraffin sections:</b> 1/50-1/200. <b>Immunofluorescence:</b> 1/50-1/200.
Reactivity:	Human, Mouse
Host:	Rabbit
Clonality:	Polyclonal
Specificity:	This antibody detects endogenous levels of DJ-1/PARK7 protein (region surrounding Pro54).
Formulation:	Phosphate buffered saline (PBS), pH 7.2. State: Aff - Purified State: Liquid purified Ig fraction Preservative: 0.05% Sodium azide
Concentration:	1.0 mg/ml
Purification:	Affinity chromatography using epitope-specific immunogen (> 95% pure by SDS-PAGE)
Conjugation:	Unconjugated
Storage:	Store undiluted at 2-8°C for one month or (in aliquots) at -20°C for longer. Avoid repeated freezing and thawing.
Stability:	Shelf life: one year from despatch.
Predicted Protein Size:	~22 kDa
Gene Name:	Parkinsonism associated deglycase
Database Link:	<u><a href="#">Entrez Gene 11315 Human Q99497</a></u>



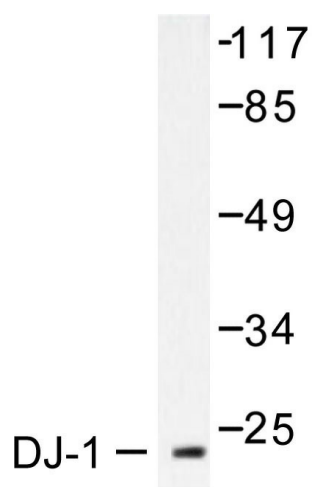
[View online »](#)

**Background:**

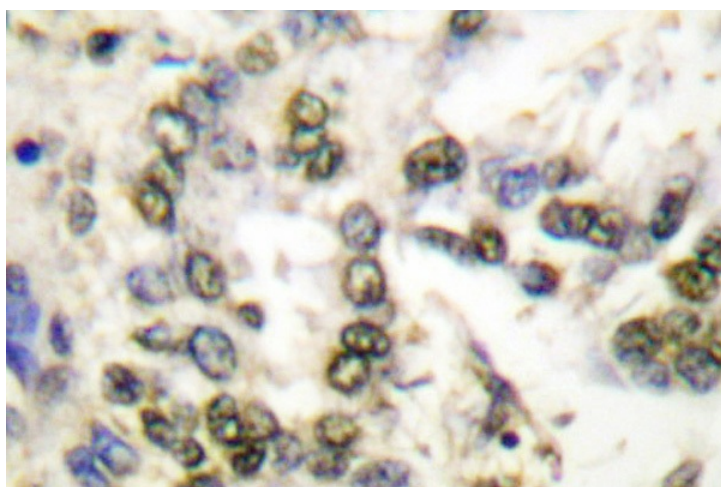
The DJ-1 gene encodes a highly-conserved protein which is implicated in a number of cell processes. DJ-1 was first identified as a novel oncogene that transformed mouse NIH/3T3 cells in cooperation with activated Ras. Additionally, DJ-1 was cloned in rat as SP22 or CAP-1 and found to be an infertility-related sperm protein, whose expression is reduced in sperm treated with toxicants. DJ-1 also positively regulates the androgen receptor (AR) by forming a complex with PIASx $\alpha$ , a negative regulator of AR. The gene encoding human DJ-1 maps to chromosome 1p36.33-p36.12, a region identified as a hot spot of chromosome abnormalities in several tumor cells. Subsequently, mutations in the DJ-1 gene have been implicated in Parkinson's disease, and loss of DJ-1 function leads to neurodegeneration. DJ-1 is an ubiquitously expressed protein that is induced in response to growth stimuli and translocates from the cytoplasm to the nucleus during the S phase of the cell cycle.

**Synonyms:**

Oncogene DJ1, Parkinson disease protein 7

**Product images:**


Western blot analysis in extracts from HuvEc cells using DJ-1 / PARK7 antibody (Cat.-No. [AP06086PU-N]).



Immunohistochemical analysis in paraffin-embedded human lung carcinoma tissue using DJ-1 / PARK7 antibody (Cat.-No. [AP06086PU-N]).