

## Product datasheet for **AP06085PU-S**

### Cytochrome C (CYCS) Rabbit Polyclonal Antibody

#### Product data:

Product Type:	Primary Antibodies
Applications:	IHC, WB
Recommended Dilution:	<b>Western blot:</b> 1/500-1/1000. <b>Immunohistochemistry on Paraffin sections:</b> 1/50-1/200.
Reactivity:	Human, Mouse, Rat
Host:	Rabbit
Clonality:	Polyclonal
Immunogen:	Synthetic peptide, corresponding to the N-terminal of Human Cytochrome c
Specificity:	This antibody detects endogenous levels of Cytochrome c protein (region surrounding His19).
Formulation:	Phosphate buffered saline (PBS), pH 7.2. State: Aff - Purified State: Liquid purified Ig fraction (> 95% pure by SDS-PAGE) Preservative: 0.05% Sodium azide
Concentration:	1.0 mg/ml
Purification:	Affinity chromatography using epitope-specific immunogen
Conjugation:	Unconjugated
Storage:	Store undiluted at 2-8°C or (in aliquotes) at -20°C for longer. Avoid repeated freezing and thawing.
Stability:	Shelf life: one year from despatch.
Predicted Protein Size:	~15 kDa
Gene Name:	cytochrome c, somatic
Database Link:	<a href="#">Entrez Gene 54205 Human P99999</a>



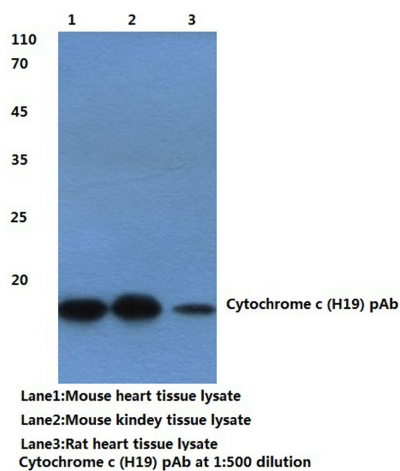
[View online »](#)

**Background:**

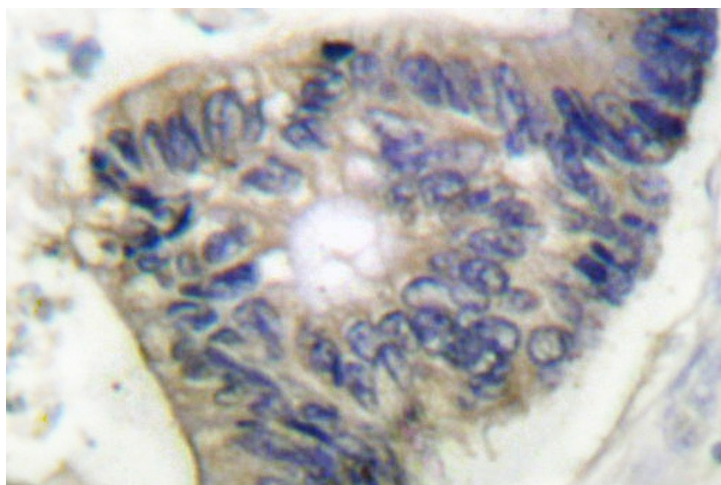
Cytochrome C is an electron transporting protein that resides within the intermembrane space of the mitochondria, where it plays a critical role in the process of oxidative phosphorylation and production of cellular ATP. An increasing amount of interest has been directed toward the role which cytochrome C has been demonstrated to play in apoptotic processes. Following exposure to apoptotic stimuli, cytochrome C is rapidly released from the mitochondria into the cytosol, an event which may be required for the completion of apoptosis in some systems. Cytosolic cytochrome C functions in the activation of caspase 3, an ICE family molecule that is a key effector of apoptosis.

**Synonyms:**

CYCS, CYC

**Product images:**

Western blot (WB) analysis of Cytochrome c antibody (Cat.-No.: [AP06085PU-N])



Immunohistochemical analysis in paraffin-embedded human colon carcinoma tissue using Cytochrome c antibody (Cat.-No., [AP06085PU-N]).