

Product datasheet for **AP06084PU-S**

Cyclin G (CCNG1) Rabbit Polyclonal Antibody

Product data:

Product Type:	Primary Antibodies
Applications:	IHC, WB
Recommended Dilution:	Western blot: 1/500-1/1000. Immunohistochemistry on Paraffin Sections: 1/50-1/200.
Reactivity:	Human, Mouse, Rat
Host:	Rabbit
Clonality:	Polyclonal
Specificity:	This antibody detects endogenous levels of Cyclin G protein. (region surrounding Ile194)
Formulation:	PBS, pH~7.2 State: Aff - Purified State: Liquid purified Ig fraction (> 95% pure by SDS-PAGE) Preservative: 0.05% Sodium Azide
Concentration:	1.0 mg/ml
Purification:	Affinity Chromatography using epitope-specific immunogen
Conjugation:	Unconjugated
Storage:	Store undiluted at 2-8°C for one month or (in aliquots) at -20°C for longer. Avoid repeated freezing and thawing.
Stability:	Shelf life: one year from despatch.
Predicted Protein Size:	~29 kDa
Gene Name:	cyclin G1
Database Link:	Entrez Gene 900 Human P51959



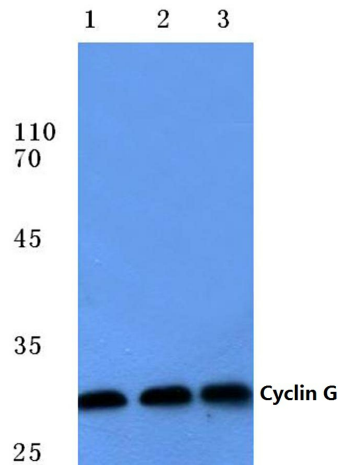
[View online »](#)

Background:

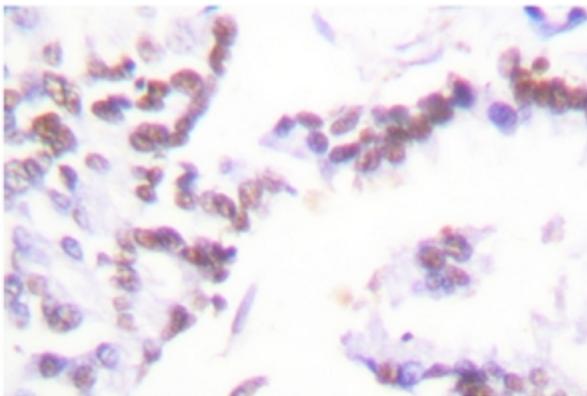
Cyclins are the regulatory subunits of Cdc2 p34 and related cyclin-dependent kinases (Cdks) which play critical roles in the control of cell cycle progression. The catalytic subunit for cyclin A and B is Cdc2 p34 kinase. The Cdc2- cyclin B complex controls the G2 to M transition whereas Cdc2-cyclin A regulates S phase progression. The G1 to S transition, however, appears to be controlled by the G1 cyclins. Cyclin D1 accumulates during G1 and associates with Cdk2, Cdk4 and Cdk5. Cyclin E and Cdk2 interact during the G1 to S transition. Cyclin G contains a typical N terminal cyclin box and a carboxy terminal domain sequence homologous to the tyrosine phosphorylation site of the epidermal growth factor receptor. Cyclin G expression is induced within 3 hours after growth stimulation and remains elevated with no apparent cell cycle dependency. Cyclin G2 shares 53% amino acid sequence identity with cyclin G1. Peak expression of cyclin G2 is seen in late S phase, as opposed to cyclin G1 expression, which is constitutive.

Synonyms:

Cyclin-G1, Cyclin-G, CCNG1, CCNG, CYCG1

Product images:

Western blot (WB) analysis of Cyclin G antibody (Cat.-No.: [AP06084PU-N]) at 1/500 dilution. Lane 1: DLD cell lysate, Lane 2: Mouse liver tissue lysate, Lane 3: Rat liver tissue lysate.



Immunohistochemistry analysis of Cyclin G Antibody (Cat.-No [AP06084PU-N]) in paraffin-embedded human lung carcinoma tissue.