

Product datasheet for **AP06082PU-N**

Cyclin E1 (CCNE1) Rabbit Polyclonal Antibody

Product data:

Product Type:	Primary Antibodies
Applications:	ELISA, IF, IHC, WB
Recommended Dilution:	Western blot: 1/500-1/1000. Immunohistochemistry on Paraffin sections: 1/50-1/200. Immunofluorescence: 1/50-1/200.
Reactivity:	Human, Mouse
Host:	Rabbit
Clonality:	Polyclonal
Specificity:	This antibody detects endogenous levels of Cyclin E1 protein (region surrounding Leu389).
Formulation:	Phosphate buffered saline (PBS), pH 7.2. State: Aff - Purified State: Liquid purified Ig fraction Preservative: 0.05% Sodium azide
Concentration:	1.0 mg/ml
Purification:	Affinity chromatography using epitope-specific immunogen (> 95% pure by SDS-PAGE)
Conjugation:	Unconjugated
Storage:	Store undiluted at 2-8°C for one month or (in aliquots) at -20°C for longer. Avoid repeated freezing and thawing.
Stability:	Shelf life: one year from despatch.
Predicted Protein Size:	~48 kDa
Gene Name:	cyclin E1
Database Link:	Entrez Gene 898 Human P24864



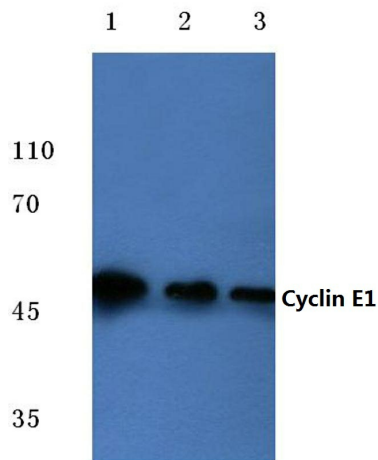
[View online »](#)

Background:

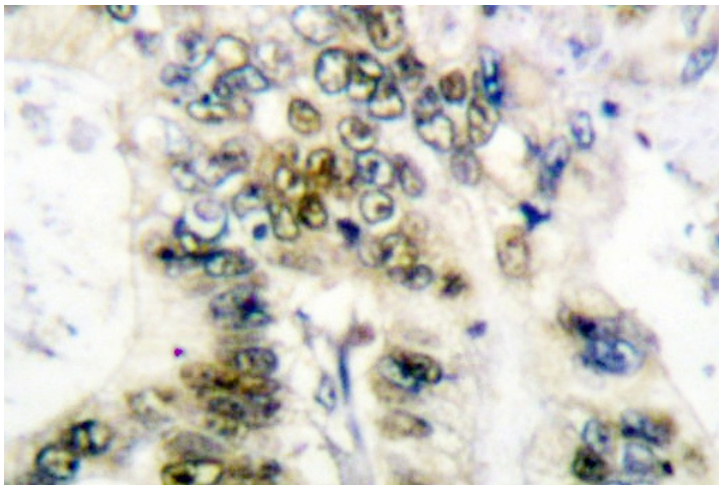
Cyclins were first identified in invertebrates as proteins that oscillate dramatically through the cell cycle. These proteins have been well conserved through evolution and play a critical role in regulation of cell division. cyclin E, along with the three cyclin D proteins and cyclin C, has been shown to represent a putative G1 cyclin on the basis of its cyclic pattern of mRNA expression, with maximal levels being detected near the G1/S boundary. cyclin E has been found to be associated with the transcription factor E2F in a temporally regulated manner. The cyclin E/E2F complex is detected primarily during the G1 phase of the cell cycle and decreases as cells enter S phase. E2F is known to be a critical transcription factor for expression of several S phase specific proteins.

Synonyms:

Cyclin-E1, CCNE1, CCNE

Product images:

Western blot (WB) analysis of Cyclin E1 antibody (Cat.-No.: AP06082PU-N) at 1/500 dilution. Lane 1: MCF-7 cell lysate, Lane 2: Mouse liver tissue lysate, Lane 3: Rat kidney tissue lysate.



Immunohistochemical analysis in paraffin-embedded human colon carcinoma tissue using Cyclin E1 antibody (Cat.-No. AP06082PU-N).