

Product datasheet for **AP06080PU-M**

Cyclin A1 (CCNA1) Rabbit Polyclonal Antibody

Product data:

Product Type:	Primary Antibodies
Applications:	ELISA, IHC, WB
Recommended Dilution:	Western blot: 1/500-1/1000. Immunohistochemistry on Paraffin sections: 1/50-1/200.
Reactivity:	Human, Mouse, Rat
Host:	Rabbit
Clonality:	Polyclonal
Specificity:	The antibody detects endogenous levels of Cyclin A1 protein (region surrounding Arg436).
Formulation:	Phosphate buffered saline (PBS), pH 7.2. State: Aff - Purified State: Liquid purified Ig fraction Preservative: 0.05% Sodium azide
Concentration:	1.0 mg/ml
Purification:	Affinity chromatography using epitope-specific immunogen (> 95% pure by SDS-PAGE).
Conjugation:	Unconjugated
Storage:	Store undiluted at 2-8°C for one month or (in aliquots) at -20°C for longer. Avoid repeated freezing and thawing.
Stability:	Shelf life: one year from despatch.
Predicted Protein Size:	~52 kDa
Gene Name:	cyclin A1
Database Link:	Entrez Gene 8900 Human P78396



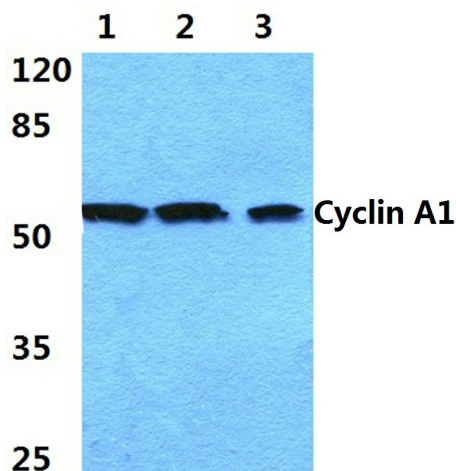
[View online »](#)

Background:

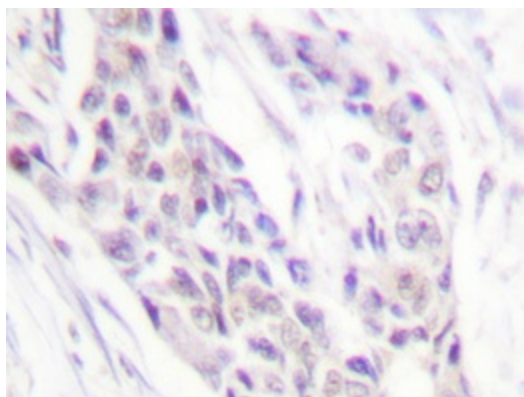
Cyclin A accumulates prior to cyclin B in the cell cycle, appears to be involved in control of S phase and has been shown to associate with cyclin-dependent kinase-2 (Cdk2). In addition, cyclin A has been implicated in cell transformation and is found in complexes with E1A, transcription factors DRTF1 and E2F and retinoblastoma protein, p110. A second form of cyclin A, named cyclin A1 because of its high sequence homology to *Xenopus* cyclin A1, is most highly expressed in germ cells. It has been proposed that cyclin A1 can associate with Cdk2, p39 and Cdc2 p34.

Synonyms:

Cyclin-A1, CCNA1

Product images:


Western blot (WB) analysis of Cyclin A1 antibody (Cat.-No.: [AP06080PU-N]) at 1/500 dilution Lane 1:HeLa whole cell lysate Lane 2:sp2/0 whole cell lysate Lane 3:PC12 whole cell lysate



Immunohistochemical analysis in paraffin-embedded human breast carcinoma tissue using Cyclin A1 antibody (Cat.-No. [AP06080PU-N]).