

## Product datasheet for **AP06079PU-S**

### Cyclin A2 (CCNA2) Rabbit Polyclonal Antibody

#### Product data:

Product Type:	Primary Antibodies
Applications:	ELISA, IF, IHC, WB
Recommended Dilution:	<b>Western blot:</b> 1/500-1/1000. <b>Immunohistochemistry on Paraffin sections:</b> 1/50-1/200. <b>Immunofluorescence:</b> 1/50-1/200.
Reactivity:	Human, Mouse, Rat
Host:	Rabbit
Clonality:	Polyclonal
Specificity:	This antibody detects endogenous levels of Cyclin A2 protein (region surrounding Trp250).
Formulation:	Phosphate buffered saline (PBS), pH 7.2. State: Aff - Purified State: Liquid purified Ig fraction Preservative: 0.05% Sodium azide
Concentration:	1.0 mg/ml
Purification:	Affinity chromatography using epitope-specific immunogen (> 95% pure by SDS-PAGE).
Conjugation:	Unconjugated
Storage:	Store undiluted at 2-8°C for one month or (in aliquots) at -20°C for longer. Avoid repeated freezing and thawing.
Stability:	Shelf life: one year from despatch.
Predicted Protein Size:	~52 kDa
Gene Name:	cyclin A2
Database Link:	<a href="#">Entrez Gene 890 Human P20248</a>



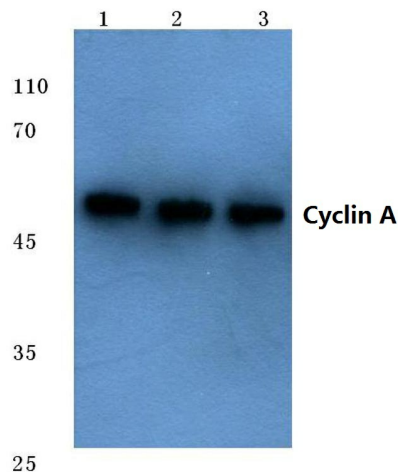
[View online »](#)

**Background:**

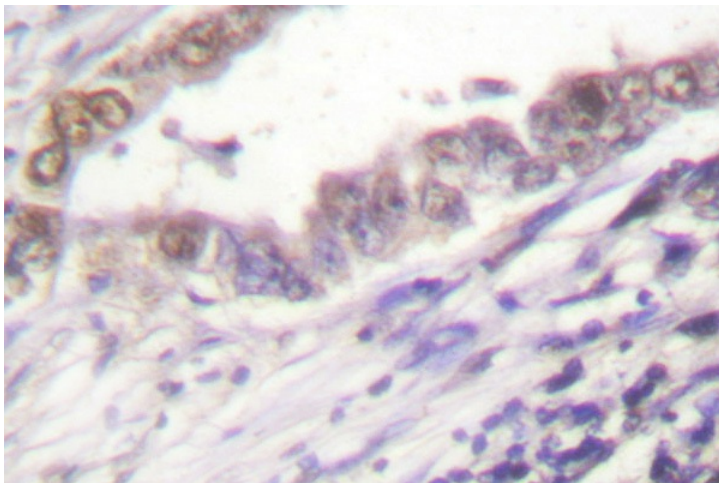
The critical role that the family of regulatory proteins known as cyclins play in eukaryotic cell cycle regulation is well established. The best-characterized cyclin complex is the mitotic cyclin B/Cdc2 p34 kinase, the active component of maturing promoting factor. Cyclin A accumulates prior to cyclin B in the cell cycle, appears to be involved in control of S phase and has been shown to associate with cyclin-dependent kinase-2 (Cdk2). In addition, cyclin A has been implicated in cell transformation and is found in complexes with E1A, transcription factors DRTF1 and E2F and retinoblastoma protein, p110. A second form of cyclin A, named cyclin A1 because of its high sequence homology to *Xenopus* cyclin A1, is most highly expressed in germ cells. It has been proposed that cyclin A1 can associate with Cdk2, p39 and Cdc2 p34.

**Synonyms:**

Cyclin-A2, CCNA2, CCN1, CCNA, Cyclin A

**Product images:**

Western blot (WB) analysis of Cyclin A antibody (Cat.-No.: [AP06079PU-N]) at 1/500 dilution Lane 1:HEK293T cell lysate Lane 2:NIH-3T3 cell lysate Lane 3:Rat brain tissue lysate



Immunohistochemical analysis in paraffin-embedded human lung carcinoma tissue using Cyclin A2 antibody (Cat.-No. [AP06079PU-N]).