

Product datasheet for **AP06078PU-S**

Cullin 2 (CUL2) Rabbit Polyclonal Antibody

Product data:

Product Type:	Primary Antibodies
Applications:	IF, IHC, WB
Recommended Dilution:	Western blot: 1/500-1/1000. Immunohistochemistry on Paraffin sections: 1/50-1/200. Immunofluorescence: 1/50-1/200.
Reactivity:	Human, Mouse
Host:	Rabbit
Clonality:	Polyclonal
Specificity:	This antibody detects endogenous levels of Cullin-2 protein (region surrounding Ile726).
Formulation:	Phosphate buffered saline (PBS), pH 7.2. State: Aff - Purified State: Liquid purified Ig fraction Preservative: 0.05% Sodium azide
Concentration:	1.0 mg/ml
Purification:	Affinity-chromatography using epitope-specific immunogen (> 95% pure by SDS-PAGE)
Conjugation:	Unconjugated
Storage:	Store undiluted at 2-8°C for one month or (in aliquots) at -20°C for longer. Avoid repeated freezing and thawing.
Stability:	Shelf life: one year from despatch.
Predicted Protein Size:	~ 82, 84 kDa
Gene Name:	cullin 2
Database Link:	Entrez Gene 71745 Mouse Entrez Gene 8453 Human Q13617



[View online »](#)

Background:

Cullin proteins comprise a distinct family of mediators that participate in the selective targeting of proteins for ubiquitin (Ub)-mediated proteolysis. CUL-1, which is the mammalian homolog of Cdc53 from yeast, is an integral component of the E3 ubiquitin ligase complex designated SCF. The SCF(Skp1/CUL-1/F-box protein complex) consists of Skp1 associating with both CUL-1 and an F-box protein, such as Skp2, which determines the substrate specificity of the complex. CUL-1 mediated ubiquitination results in the degradation of cell cycle proteins cyclin D, p21 and cyclin E. Another cullin, CUL-3 facilitates the degradation of cyclin E independent of SCF activity, while CUL-2 associates with the tumor suppressing protein VHL and elongin B to form VBC complexes, which structurally resemble the SCF ligase. Proteolysis also occurs by way of CUL-4 associating with Nedd-8, a ubiquitin- like protein, where it too functions as an active component of a multifunctional E3 complex. CUL-5, or vasopressin-activated, calcium-mobilizing protein (VACM-1), is also included in the cullin family as it shares substantial sequence homology with CUL-1.

Synonyms:

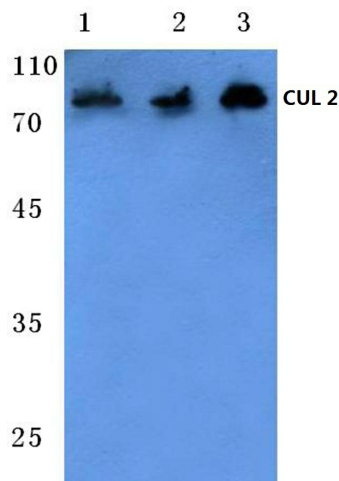
CUL-2, CUL2

Protein Families:

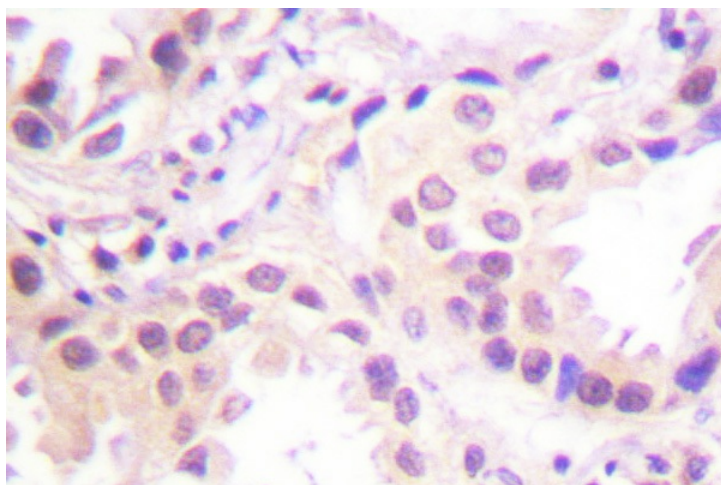
Druggable Genome

Protein Pathways:

Pathways in cancer, Renal cell carcinoma, Ubiquitin mediated proteolysis

Product images:

Western blot (WB) analysis of CUL-2 antibody (Cat.-No.: [AP06078PU-N]) at 1/500 dilution. Lane 1: MCF-7 cell lysate, Lane 2: Mouse liver tissue lysate, Lane 3: Rat kidney tissue lysate.



Immunohistochemical (IHC) analysis in paraffin-embedded human lung carcinoma tissue using Cullin-2 antibody (Cat-No. [AP06078PU-N]).