

Product datasheet for **AP06077PU-M**

Cullin 1 (CUL1) Rabbit Polyclonal Antibody

Product data:

Product Type:	Primary Antibodies
Applications:	IF, IHC, WB
Recommended Dilution:	Western blot: 1/500-1/1000. Immunohistochemistry on Paraffin sections: 1/50-1/200. Immunofluorescence: 1/50-1/200.
Reactivity:	Human, Mouse
Host:	Rabbit
Clonality:	Polyclonal
Specificity:	This antibody detects endogenous levels of Cullin-1 protein (region surrounding Tyr761).
Formulation:	Phosphate buffered saline (PBS), pH 7.2. State: Aff - Purified State: Liquid purified Ig fraction Preservative: 0.05% Sodium azide
Concentration:	1.0 mg/ml
Purification:	Affinity-chromatography using epitope-specific immunogen (> 95% pure by SDS-PAGE)
Conjugation:	Unconjugated
Storage:	Store undiluted at 2-8°C for one month or (in aliquots) at -20°C for longer. Avoid repeated freezing and thawing.
Stability:	Shelf life: one year from despatch.
Predicted Protein Size:	~90 kDa
Gene Name:	cullin 1
Database Link:	Entrez Gene 26965 Mouse Entrez Gene 8454 Human Q13616



[View online »](#)

Background:

CUL-1, which is the mammalian homolog of yeast Cdc53, is an integral component of the E3 ubiquitin ligase complex designated SCF. The SCF (Skp1/CUL-1/F-box protein complex) consists of Skp1 associating with both CUL-1 and an F-box protein, such as Skp2, which determines the substrate specificity of the complex. CUL-1-mediated ubiquitination results in the degradation of cell cycle proteins cyclin D, p21 and cyclin E. Another cullin, CUL-3, facilitates the degradation of cyclin E independent of SCF activity, while CUL-2 associates with the tumor suppressing protein VHL and elongin B to form VBC complexes, which structurally resemble the SCF ligase.

Synonyms:

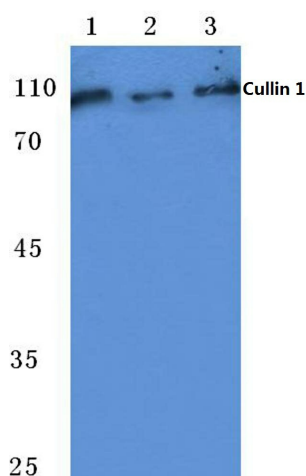
Cullin-1, CUL-1, CUL1

Protein Families:

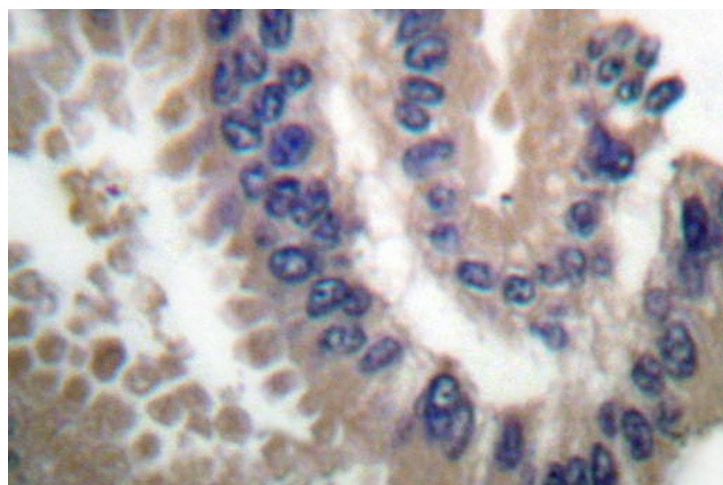
Druggable Genome

Protein Pathways:

Cell cycle, Oocyte meiosis, TGF-beta signaling pathway, Ubiquitin mediated proteolysis, Wnt signaling pathway

Product images:


Western blot (WB) analysis of CUL-1 antibody (Cat.-No.: [AP06077PU-N]) at 1/500 dilution Lane 1:MCF-7 cell lysate Lane 2:NIH-3T3 cell lysate Lane 3:Rat kidney tissue lysate



Immunohistochemical analysis in paraffin-embedded human lung carcinoma tissue using Cullin-1 antibody (Cat.-No. [AP06077PU-N]).