

Product datasheet for **AP06075PU-N**

p38 (CRK) Rabbit Polyclonal Antibody

Product data:

Product Type:	Primary Antibodies
Applications:	ELISA, IF, IHC, WB
Recommended Dilution:	Western blot: 1/500-1/1000. Immunohistochemistry on Paraffin sections: 1/50-1/200. Immunofluorescence: 1/50-1/200.
Reactivity:	Human, Mouse, Rat
Host:	Rabbit
Clonality:	Polyclonal
Specificity:	This antibody detects endogenous levels of CRK protein (region surrounding aa215).
Formulation:	Phosphate buffered saline (PBS), pH 7.2. State: Aff - Purified State: Liquid purified Ig fraction Preservative: 15 mM Sodium azide
Concentration:	1.0 mg/ml
Purification:	Affinity chromatography using epitope-specific immunogen (> 95% pure by SDS-PAGE)
Conjugation:	Unconjugated
Storage:	Store undiluted at 2-8°C for one month or (in aliquots) at -20°C for longer. Avoid repeated freezing and thawing.
Stability:	Shelf life: one year from despatch.
Predicted Protein Size:	~42 kDa
Gene Name:	v-crk avian sarcoma virus CT10 oncogene homolog
Database Link:	Entrez Gene 12928 Mouse Entrez Gene 54245 Rat Entrez Gene 1398 Human P46108



[View online »](#)

Background:

Crk I and Crk II are encoded by the same gene, which undergoes alternative splicing to yield these two proteins, but differ in their biological activities. Crk II has less transforming activity than Crk I, although both Crk I and Crk II bind to many tyrosine-phosphorylated proteins that bind to GRB2. In addition, Crk II becomes rapidly tyrosine-phosphorylated in response to stimulation with insulin-like growth factor I (IGF-I) and might be involved in the IGF-I receptor signalling pathway.

Synonyms:

Proto-oncogene C-crkl, p38

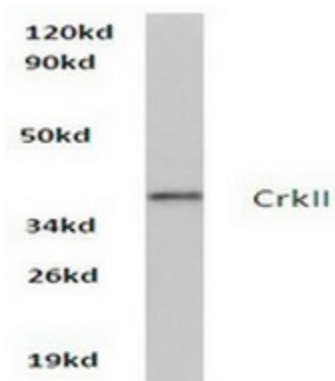
Protein Families:

Druggable Genome, Transcription Factors

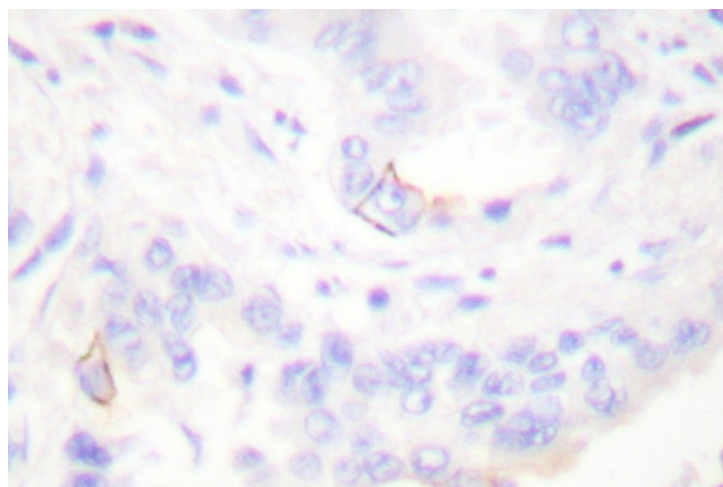
Protein Pathways:

Chemokine signaling pathway, Chronic myeloid leukemia, ErbB signaling pathway, Fc gamma R-mediated phagocytosis, Focal adhesion, Insulin signaling pathway, MAPK signaling pathway, Neurotrophin signaling pathway, Pathways in cancer, Regulation of actin cytoskeleton, Renal cell carcinoma

Product images:



Western blot analysis in extracts from Hela cells using CRK antibody (Cat.-No. AP06075PU-N).



Immunohistochemical analysis in paraffin-embedded human lung carcinoma tissue using CRK antibody (Cat.-No. AP06075PU-N).