

## Product datasheet for **AP06073PU-N**

### CREB1 Rabbit Polyclonal Antibody

#### Product data:

Product Type:	Primary Antibodies
Applications:	ELISA, IHC, WB
Recommended Dilution:	<b>Western blot:</b> 1/500-1/1000. <b>Immunohistochemistry on Paraffin sections:</b> 1/50-1/200.
Reactivity:	Human, Mouse, Rat
Host:	Rabbit
Clonality:	Polyclonal
Immunogen:	Synthetic peptide, corresponding to amino acids 100-150 of Human CREB.
Specificity:	This antibody detects endogenous levels of CREB1 protein (region surrounding Ile127).
Formulation:	Phosphate buffered saline (PBS), pH 7.2. State: Aff - Purified State: Liquid purified Ig fraction Preservative: 15 mM Sodium azide
Concentration:	1.0 mg/ml
Purification:	Affinity chromatography using epitope-specific immunogen (> 95% pure by SDS-PAGE).
Conjugation:	Unconjugated
Storage:	Store undiluted at 2-8°C for one month or (in aliquots) at -20°C for longer. Avoid repeated freezing and thawing.
Stability:	Shelf life: one year from despatch.
Predicted Protein Size:	~38 kDa
Gene Name:	cAMP responsive element binding protein 1
Database Link:	<a href="#">Entrez Gene 1385 Human P16220</a>



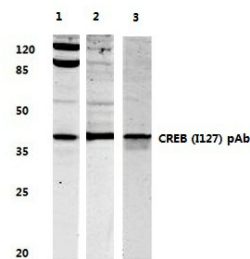
[View online »](#)

**Background:**

Cyclic AMP Response Element Binding protein (CREB) is a basic / leucine zipper transcription factor that binds the cyclic AMP response element (CRE) and activates transcription in response to a variety of extracellular signals including neurotransmitters, hormones, membrane depolarization, and growth and neurotrophic factors. Activation of CREB is dependent upon the phosphorylation of serine 133. Phosphorylation occurs via p44 / 42 MAP kinase and p90RSK and also via p38 MAP kinase and MSK 1. Although CREB will bind DNA independent of its phosphorylation state, only the phosphorylated form is competent as a transcription factor. CREB binding protein (CBP), a transcriptional coactivator that directly interacts with CREB, binds to CREB in the region of serine 133.

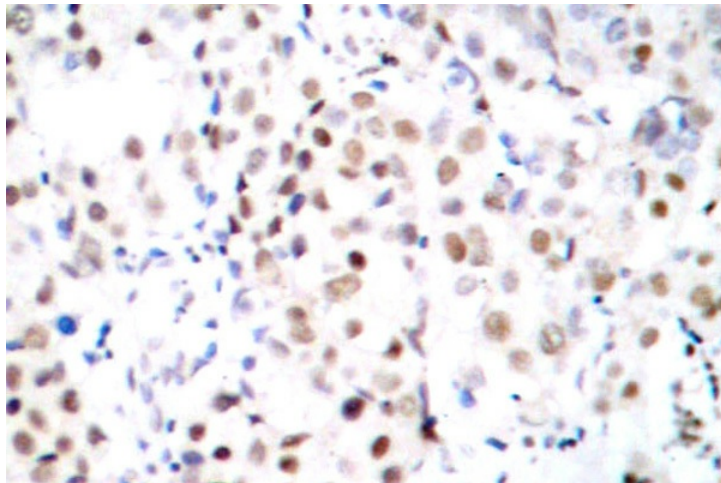
**Synonyms:**

CREB-1

**Product images:**


Lane1: MCF-7 whole cell lysate treated with TNF-alpha  
 Lane2: mouse brain tissues lysate  
 Lane3: Rat brain tissues lysate  
 CREB (1127) pAb at 1:500 dilution

Western blot (WB) analysis of CREB antibody



Immunohistochemical analysis in paraffin-embedded human breast carcinoma tissue using CREB1 antibody.