

Product datasheet for **AP06073PU-M**

CREB1 Rabbit Polyclonal Antibody

Product data:

| | |
|-------------------------|---|
| Product Type: | Primary Antibodies |
| Applications: | ELISA, IHC, WB |
| Recommended Dilution: | Western blot: 1/500-1/1000. Immunohistochemistry on Paraffin sections: 1/50-1/200. |
| Reactivity: | Human, Mouse, Rat |
| Host: | Rabbit |
| Clonality: | Polyclonal |
| Immunogen: | Synthetic peptide, corresponding to amino acids 100-150 of Human CREB. |
| Specificity: | This antibody detects endogenous levels of CREB1 protein (region surrounding Ile127). |
| Formulation: | Phosphate buffered saline (PBS), pH 7.2. State: Aff - Purified State: Liquid purified Ig fraction Preservative: 15 mM Sodium azide |
| Concentration: | 1.0 mg/ml |
| Purification: | Affinity chromatography using epitope-specific immunogen (> 95% pure by SDS-PAGE). |
| Conjugation: | Unconjugated |
| Storage: | Store undiluted at 2-8°C for one month or (in aliquots) at -20°C for longer. Avoid repeated freezing and thawing. |
| Stability: | Shelf life: one year from despatch. |
| Predicted Protein Size: | ~38 kDa |
| Gene Name: | cAMP responsive element binding protein 1 |
| Database Link: | Entrez Gene 1385 Human P16220 |

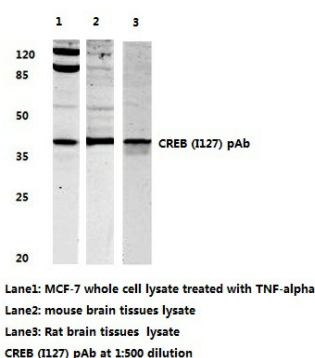
[View online »](#)

Background:

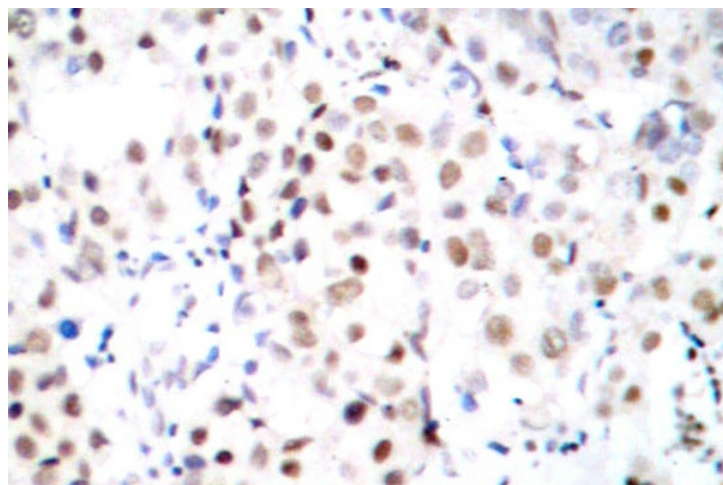
Cyclic AMP Response Element Binding protein (CREB) is a basic / leucine zipper transcription factor that binds the cyclic AMP response element (CRE) and activates transcription in response to a variety of extracellular signals including neurotransmitters, hormones, membrane depolarization, and growth and neurotrophic factors. Activation of CREB is dependent upon the phosphorylation of serine 133. Phosphorylation occurs via p44 / 42 MAP kinase and p90RSK and also via p38 MAP kinase and MSK 1. Although CREB will bind DNA independent of its phosphorylation state, only the phosphorylated form is competent as a transcription factor. CREB binding protein (CBP), a transcriptional coactivator that directly interacts with CREB, binds to CREB in the region of serine 133.

Synonyms:

CREB-1

Product images:


Western blot (WB) analysis of CREB antibody



Immunohistochemical analysis in paraffin-embedded human breast carcinoma tissue using CREB1 antibody.