

Product datasheet for **AP06072PU-M**

PTGS1 Rabbit Polyclonal Antibody

Product data:

Product Type:	Primary Antibodies
Applications:	IHC, WB
Recommended Dilution:	Western blot: 1/500-1/1000. Immunohistochemistry on Paraffin sections: 1/50-1/200.
Reactivity:	Human
Host:	Rabbit
Clonality:	Polyclonal
Immunogen:	Synthetic peptide, corresponding to amino acids 555-600 of Human Cox-1.
Specificity:	This antibody detects endogenous levels of Cox1/PGHS1 protein (region surrounding Ser585).
Formulation:	Phosphate buffered saline (PBS), pH 7.2. State: Aff - Purified State: Liquid purified Ig fraction Preservative: 0.05% Sodium azide
Concentration:	1.0 mg/ml
Purification:	Affinity- chromatography using epitope-specific immunogen and the purity is > 95% (by SDS-PAGE)
Conjugation:	Unconjugated
Storage:	Store undiluted at 2-8°C for one month or (in aliquots) at -20°C for longer. Avoid repeated freezing and thawing.
Stability:	Shelf life: one year from despatch.
Predicted Protein Size:	~ 70 kDa
Gene Name:	prostaglandin-endoperoxide synthase 1
Database Link:	Entrez Gene 5742 Human P23219



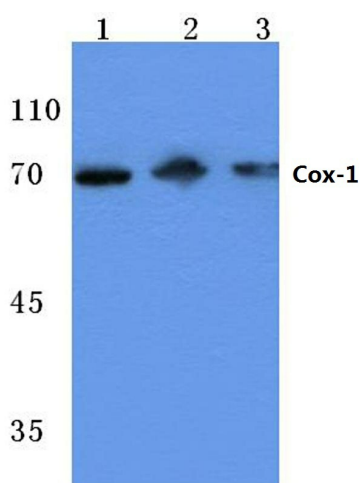
[View online »](#)

Background:

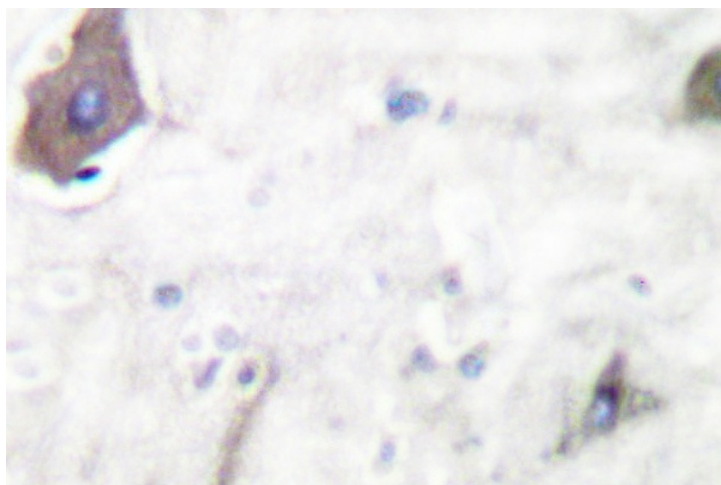
Cytochrome c oxidase subunit I, COX1 (also designated COI, MTCO2 or oxidative phosphorylation (OxPhos) Complex IV, subunit I) is one of three mitochondrial DNA (mtDNA) encoded subunits (MTCO1-3) of respiratory Complex IV. Cytochrome c oxidase is a hetero-oligomeric enzyme composed of 13 subunits localized to the mitochondrial inner membrane and is the terminal enzyme complex of the electron transport chain. Complex IV catalyzes the reduction of molecular oxygen to water. The energy released is used to transport protons across the mitochondrial inner membrane. The resulting electrochemical gradient is necessary for the synthesis of ATP. Complex IV contains 13 polypeptides; COX1, COX2 and COX3 (MTCO1-3) make up the catalytic core and are encoded by mtDNA while subunits IV, Va, Vb, VIa, VIb, VIc, VIIa, VIIb, VIIc and VIII are nuclear-encoded.

Synonyms:

PGH synthase 1, PGHS-1, COX-1, COX1, PTGS1, Cyclooxygenase-1

Product images:


Western blot (WB) analysis of Cox-1 antibody at 1/500 dilution Lane 1:Hela cell lysate Lane 2:Raw264.7 cell lysate Lane 3:Rat kidney tissue lysate



Immunohistochemical analysis using Cyclooxygenase 1 antibody in paraffin-embedded human brain tissue.