

## Product datasheet for **AP06070PU-M**

### **GJA1 Rabbit Polyclonal Antibody**

#### **Product data:**

Product Type:	Primary Antibodies
Applications:	ELISA, IF, IHC, WB
Recommended Dilution:	<b>Immunofluorescence:</b> 1/50-1/200. <b>Western blot:</b> 1/500-1/1000. <b>Immunohistochemistry on Paraffin sections:</b> 1/50-1/200.
Reactivity:	Human, Mouse, Rat
Host:	Rabbit
Clonality:	Polyclonal
Immunogen:	Synthetic peptide, corresponding to amino acids 340-390 of Human Connexin 43.
Specificity:	This antibody detects endogenous levels of GJA1 / Cx43 protein (region surrounding Ser369).
Formulation:	Phosphate buffered saline (PBS), pH 7.2. State: Aff - Purified State: Liquid purified Ig fraction (> 95% pure by SDS-PAGE). Preservative: 0.05% Sodium azide
Concentration:	1.0 mg/ml
Purification:	Affinity chromatography using epitope-specific immunogen.
Conjugation:	Unconjugated
Storage:	Store undiluted at 2-8°C for one month or (in aliquots) at -20°C for longer. Avoid repeated freeze thaw cycles!
Stability:	Shelf life: one year from despatch.
Predicted Protein Size:	~43 kDa
Gene Name:	gap junction protein alpha 1
Database Link:	<a href="#">Entrez Gene 2697 Human P17302</a>



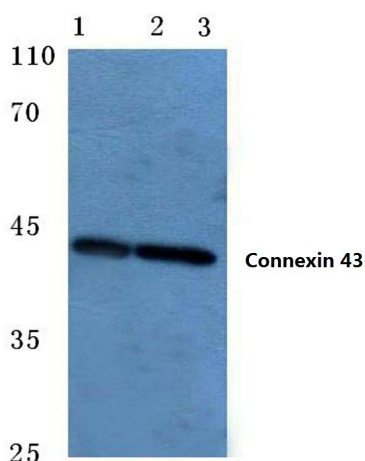
[View online »](#)

**Background:**

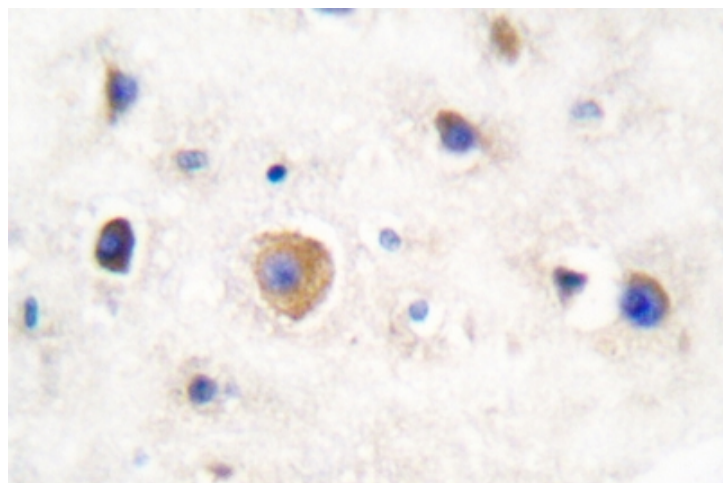
Connexin 43 (Cx43) is a member of the large family of gap junction proteins. Connexins assemble as a hexamer and are transported to the plasma membrane to create a hemichannel that can associate with hemichannels on nearby cells to create cell-to-cell channels. Clusters of these channels assemble to make gap junctions. Gap junction communication is important in development and regulation of cell growth. Phosphorylation of Cx43 is important in regulating assembly and function of gap junctions. Ser368 of Cx43 is phosphorylated by protein kinase C (PKC) after activation by phorbol esters, which decreases cell-to-cell communication. Src can interact with and phosphorylate Cx43 to alter gap junction communication.

**Synonyms:**

Gap junction alpha-1 protein, Connexin-43, GJAL

**Product images:**


Western blot (WB) analysis of Connexin 43 antibody at 1/500 dilution. Lane 1: HEK293T cell lysate Lane 2: Mouse heart tissue lysate Lane 3: Rat brain tissue lysate



Immunohistochemical analysis in paraffin-embedded human breast tissue using GJA1 / Connexin 43 antibody.