

Product datasheet for **AP06069PU-N**

Collagen IV (COL4A1) Rabbit Polyclonal Antibody

Product data:

Product Type:	Primary Antibodies
Applications:	ELISA, IHC, WB
Recommended Dilution:	Western blot: 1/500-1/1000. Immunohistochemistry on Paraffin Sections: 1/50-1/200.
Reactivity:	Human, Mouse
Host:	Rabbit
Clonality:	Polyclonal
Immunogen:	Synthetic peptide, corresponding to amino acids 11-60 of Human COL4A1.
Specificity:	This antibody detects endogenous levels of Collagen IV protein. (region surrounding Gly46)
Formulation:	Phosphate buffered saline (PBS), pH~7.2 State: Aff - Purified State: Liquid purified Ig fraction (> 95% pure by SDS-PAGE) Preservative: 0.05% Sodium Azide
Concentration:	1.0 mg/ml
Purification:	Affinity-chromatography using epitope-specific immunogen
Conjugation:	Unconjugated
Storage:	Store undiluted at 2-8°C for one month or (in aliquots) at -20°C for longer. Avoid repeated freezing and thawing.
Stability:	Shelf life: One year from despatch.
Predicted Protein Size:	~ 160 kDa
Gene Name:	collagen type IV alpha 1 chain
Database Link:	Entrez Gene 1282 Human P02462



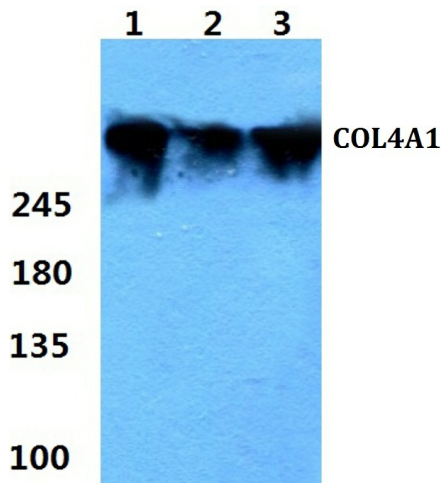
[View online »](#)

Background:

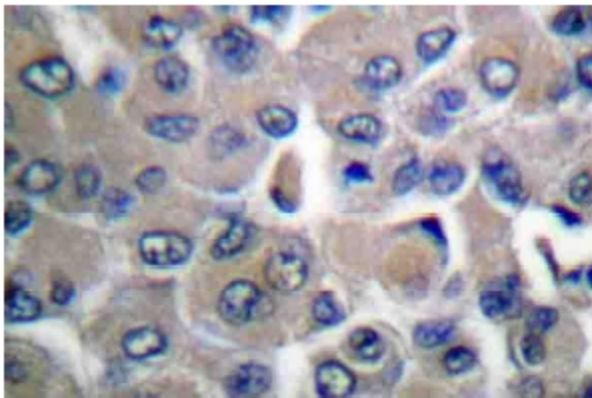
The extensive family of COL gene products (collagens) is composed of several chain types, including fibril-forming interstitial Collagens (Types I, II, III and V) and basement membrane Collagens (Type IV), each type containing multiple isoforms. Collagens are fibrous, extracellular matrix proteins with high tensile strength and are the major components of connective tissue, such as tendons and cartilage. All collagens contain a triple helix domain and frequently show lateral self-association in order to form complex connective tissues. Several collagens also play a role in cell adhesion, important for maintaining normal tissue architecture and function.

Synonyms:

COL4A1

Product images:


Western blot (WB) analysis of COL4A1 antibody at 1/500 dilution Lane 1:MCF-7 whole cell lysate Lane 2:Mouse liver tissue lysate Lane 3:Rat liver tissue lysate



Immunohistochemistry analyzes of Collagen IV antibody in paraffin-embedded human breast carcinoma tissue.