

Product datasheet for **AP06067PU-N**

Claudin 7 (CLDN7) Rabbit Polyclonal Antibody

Product data:

Product Type:	Primary Antibodies
Applications:	ELISA, IHC, WB
Recommended Dilution:	Western blot: 1/500 - 1/1000. Immunohistochemistry on paraffin sections: 1/50 - 1/200. Immunofluorescence: 1/50-1/200.
Reactivity:	Human, Mouse, Rat
Host:	Rabbit
Clonality:	Polyclonal
Immunogen:	Synthetic peptide, corresponding to amino acids 171-220 of Human Claudin-7.
Specificity:	This antibody detects endogenous levels of Claudin 7 protein. (region surrounding Pro202)
Formulation:	Phosphate buffered saline (PBS), pH 7.2. State: Aff - Purified State: Liquid purified Ig fraction Preservative: 0.05% sodium azide
Concentration:	1.0 mg/ml
Purification:	Affinity chromatography (> 95% (by SDS-PAGE))
Conjugation:	Unconjugated
Storage:	Store undiluted at 2-8°C for one month or (in aliquots) at -20°C for longer. Avoid repeated freezing and thawing.
Stability:	Shelf life: one year from despatch.
Predicted Protein Size:	~ 23 kDa
Gene Name:	claudin 7
Database Link:	Entrez Gene 1366 Human O95471



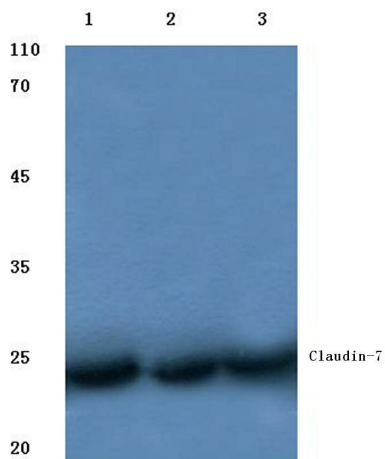
[View online »](#)

Background:

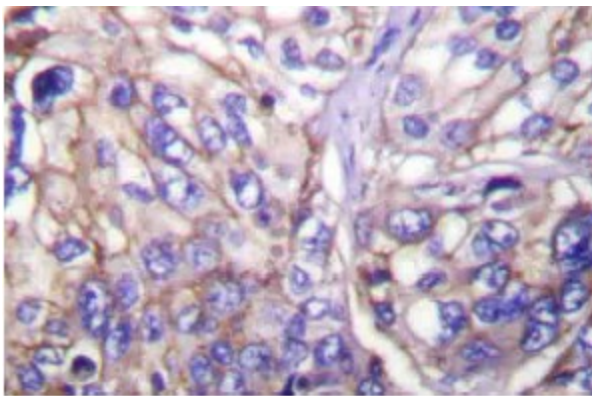
The Claudin superfamily consists of many structurally related proteins in humans. These proteins are important structural and functional components of tight junctions in paracellular transport. Claudins are located in both epithelial and endothelial cells in all tight junction-bearing tissues. Three classes of proteins are known to localize to tight junctions, including the Claudins, Occludin and junction adhesion molecule (JAM). Claudins, which consist of four transmembrane domains and two extracellular loops, make up tight junction strands. Claudin expression is highly restricted to specific regions of different tissues and may have an important role in transcellular transport through tight junctions. mRNA studies indicate that claudin-7 is specifically expressed in mouse lung and kidney, but not in heart, brain, spleen, liver, skeletal muscle or testis. The gene encoding human claudin-7 maps to chromosome 17p13.

Synonyms:

CLDN-7, CEPTRL2, CPETRL2

Product images:


Western blot (WB) analysis of Claudin-7 antibody at 1/500 dilution Lane 1:HEK293T whole cell lysate Lane 2:Raw264.7 whole cell lysate Lane 3:Rat heart tissue lysate



Immunohistochemistry (IHC) analyzes of Claudin7 antibody in paraffin-embedded human lung carcinoma tissue.