

Product datasheet for **AP06066PU-M**

Claudin 5 (CLDN5) Rabbit Polyclonal Antibody

Product data:

Product Type:	Primary Antibodies
Applications:	IF, IHC, WB
Recommended Dilution:	Western blot: 1/500-1/1000. Immunofluorescence: 1/50-1/200. Immunohistochemistry on Paraffin Sections: 1/50-1/200.
Reactivity:	Human, Mouse, Rat
Host:	Rabbit
Clonality:	Polyclonal
Immunogen:	Synthetic peptide, corresponding to amino acids 171-220 of Human Claudin-5.
Specificity:	This antibody detects endogenous levels of Claudin 5 protein. (region surrounding Ser201)
Formulation:	Phosphate buffered saline (PBS), pH~7.2 State: Aff - Purified State: Liquid purified Ig fraction (> 95% pure by SDS-PAGE) Preservative: 0.05% Sodium Azide
Concentration:	1.0 mg/ml
Purification:	Affinity Chromatography using epitope-specific immunogen
Conjugation:	Unconjugated
Storage:	Store undiluted at 2-8°C for one month or (in aliquots) at -20°C for longer. Avoid repeated freezing and thawing.
Stability:	Shelf life: one year from despatch.
Predicted Protein Size:	~ 23 kDa
Gene Name:	claudin 5
Database Link:	Entrez Gene 7122 Human O00501



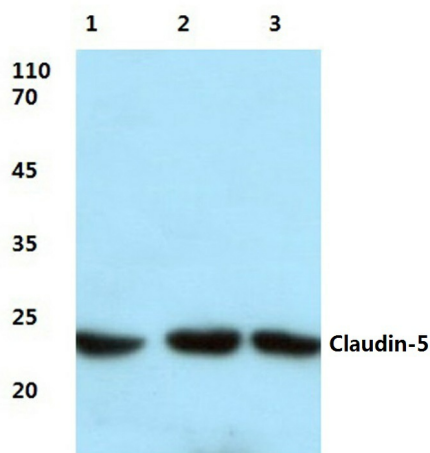
[View online »](#)

Background:

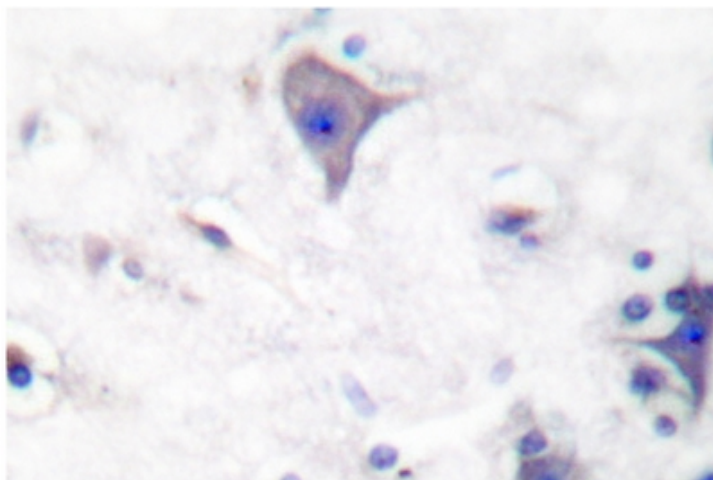
The Claudin superfamily consists of many structurally related proteins in humans. These proteins are important structural and functional components of tight junctions in paracellular transport. Claudins are located in both epithelial and endothelial cells in all tight junction-bearing tissues. Three classes of proteins are known to localize to tight junctions, including the Claudins, Occludin and junction adhesion molecule (JAM). Claudins, which consist of four transmembrane domains and two extracellular loops, make up tight junction strands. Claudin expression is highly restricted to specific regions of different tissues and may have an important role in transcellular transport through tight junctions. Claudin-5 is expressed in the endothelial junctions of the rat liver and in junctions of acinar cells of the pancreas. Human claudin-5 is abundantly expressed in adult lung, heart and skeletal muscle and is deleted in patients with velocardiofacial syndrome, which is characterized by cleft palate, facial dysmorphism and conotruncal heart defects. The human claudin-5 gene maps to chromosome 22q11.21.

Synonyms:

AWAL, TMVCF, TMDVCF, Bec1

Product images:


Western blot (WB) analysis of Claudin-5 antibody at 1/500 dilution: Lane 1: HeLa whole cell lysate treated with LPS. Lane 2: Mouse liver tissue lysate. Lane 3: Rat lung tissue lysate.



Immunohistochemistry analysis of Claudin 5 antibody in paraffin-embedded Human brain tissue.