

Product datasheet for **AP06062PU-M**

Oligodendrocyte Specific Protein (CLDN11) Rabbit Polyclonal Antibody

Product data:

| | |
|-------------------------|---|
| Product Type: | Primary Antibodies |
| Applications: | ELISA, WB |
| Recommended Dilution: | Western blot: 1/500-1/1000. |
| Reactivity: | Human, Mouse, Rat |
| Host: | Rabbit |
| Clonality: | Polyclonal |
| Immunogen: | Synthetic peptide, corresponding to amino acids 171-220 of Human Claudin-11. |
| Specificity: | This antibody detects endogenous levels of Claudin 11 protein. (region surrounding Ser198) |
| Formulation: | Phosphate buffered saline (PBS), pH~7.3 State: Aff - Purified State: Liquid purified Ig fraction (> 95% pure by SDS-PAGE) Preservative: 0.05% Sodium Azide |
| Concentration: | 1.0 mg/ml |
| Purification: | Affinity Chromatography using epitope-specific immunogen |
| Conjugation: | Unconjugated |
| Storage: | Store undiluted at 2-8°C for one month or (in aliquots) at -20°C for longer. Avoid repeated freezing and thawing. |
| Stability: | Shelf life: one year from despatch. |
| Predicted Protein Size: | ~ 24 kDa |
| Gene Name: | claudin 11 |
| Database Link: | Entrez Gene 5010 Human O75508 |



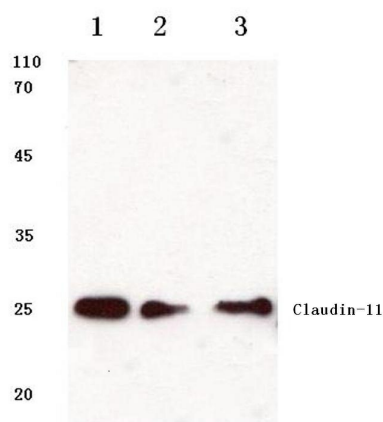
[View online »](#)

Background:

The Claudin superfamily consists of many structurally related proteins in humans. These proteins are important structural and functional components of tight junctions in paracellular transport. Claudins are located in both epithelial and endothelial cells in all tight junction-bearing tissues. Three classes of proteins are known to localize to tight junctions, including the Claudins, Occludin and junction adhesion molecule (JAM). Claudins, which consist of four transmembrane domains and two extracellular loops, make up tight junction strands. Emerging evidence suggests that the Claudin family of proteins regulates transport through tight junctions via differential discrimination for solute size and charge. Claudin expression is often highly restricted to specific regions of different tissues and may have an important role in transcellular transport through tight junctions.

Synonyms:

OSP, OTM

Product images:


Western blot (WB) analysis of Claudin-11 antibody at 1/500 dilution Lane 1: Hela whole cell lysate Lane 2: Raw264.7 whole cell lysate Lane 3: Rat heart tissue lysate