

## Product datasheet for **AP06061PU-N**

### Claudin 10 (CLDN10) Rabbit Polyclonal Antibody

#### Product data:

Product Type:	Primary Antibodies
Applications:	WB
Recommended Dilution:	<b>Western blot:</b> 1/500-1/1000. <b>Immunohistochemistry on paraffin sections:</b> 1/50-1/200. <b>Immunofluorescence:</b> 1/50-1/200.
Reactivity:	Human, Mouse
Host:	Rabbit
Clonality:	Polyclonal
Immunogen:	Synthetic peptide, corresponding to amino acids 185-230 of Human Claudin-10.
Specificity:	This antibody detects endogenous levels of Claudin-10 / CLDN10 protein (region surrounding Asn217).
Formulation:	Phosphate buffered saline (PBS), pH 7.2. State: Aff - Purified State: Liquid purified Ig fraction Preservative: 0.05% Sodium azide
Concentration:	1.0 mg/ml
Purification:	Affinity-chromatography using epitope-specific immunogen and the purity is > 95% (by SDS-PAGE)
Conjugation:	Unconjugated
Storage:	Store undiluted at 2-8°C for one month or (in aliquots) at -20°C for longer. Avoid repeated freezing and thawing.
Stability:	Shelf life: one year from despatch.
Predicted Protein Size:	~ 25 kDa
Gene Name:	claudin 10
Database Link:	<a href="#">Entrez Gene 9071 Human P78369</a>



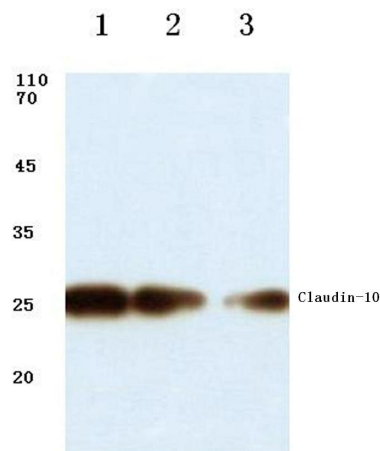
[View online »](#)

**Background:**

The Claudin superfamily consists of many structurally related proteins in humans. These proteins are important structural and functional components of tight junctions in paracellular transport. Claudins are located in both epithelial and endothelial cells in all tight junction-bearing tissues. Three classes of proteins are known to localize to tight junctions, including the Claudins, Occludin and junction adhesion molecule (JAM). Claudins, which consist of four transmembrane domains and two extracellular loops, make up tight junction strands. Emerging evidence suggests that the Claudin family of proteins regulates transport through tight junctions via differential discrimination for solute size and charge. Claudin expression is often highly restricted to specific regions of different tissues and may have an important role in transcellular transport through tight junctions.

**Synonyms:**

OSP-Like Protein, OSPL

**Product images:**

Western blot (WB) analysis of Claudin-10 antibody at 1/500 dilution Lane 1:HEK293T cell lysate Lane 2:Mouse brain tissue lysate Lane 3:Rat kidney tissue lysate