

Product datasheet for **AP06060PU-N**

Claudin 1 (CLDN1) Rabbit Polyclonal Antibody

Product data:

Product Type:	Primary Antibodies
Applications:	ELISA, IF, IHC, WB
Recommended Dilution:	Western blot: 1/500-1/1000. Immunohistochemistry on paraffin sections 1/50-1/200. Immunofluorescence: 1/50-1/200.
Reactivity:	Human, Mouse, Rat
Host:	Rabbit
Clonality:	Polyclonal
Immunogen:	Synthetic peptide, corresponding to amino acids 171-220 of Human Claudin-1.
Specificity:	This antibody detects endogenous levels of Claudin-1 protein. (region surrounding Arg197)
Formulation:	Phosphate buffered saline (PBS), pH~7.2 State: Aff - Purified State: Liquid purified Ig fraction (> 95% pure by SDS-PAGE). Preservative: 0.05% Sodium Azide
Concentration:	1.0 mg/ml
Purification:	Affinity Chromatography using epitope-specific immunogen.
Conjugation:	Unconjugated
Storage:	Store undiluted at 2-8°C for one month or (in aliquots) at -20°C for longer. Avoid repeated freezing and thawing.
Stability:	Shelf life: one year from despatch.
Predicted Protein Size:	~22 kDa
Gene Name:	claudin 1
Database Link:	Entrez Gene 9076 Human O95832



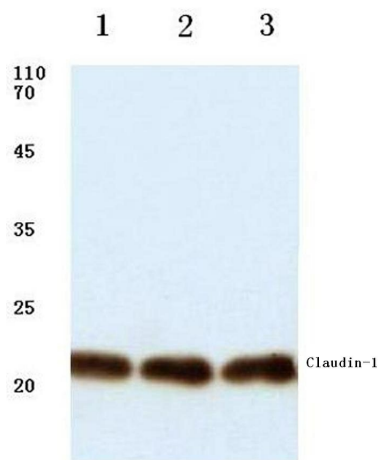
[View online »](#)

Background:

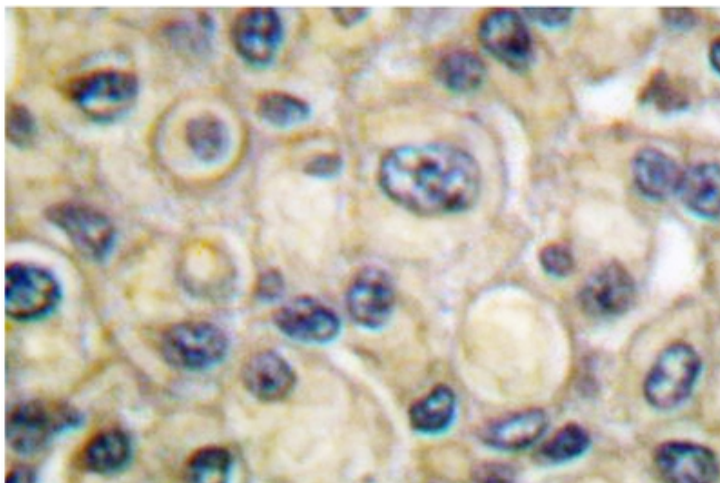
The claudin superfamily consists of many structurally related proteins in humans. These proteins are important structural and functional components of tight junctions in paracellular transport. Claudins are located in both epithelial and endothelial cells in all tight junction-bearing tissues. Three classes of proteins are known to localize to tight junctions, including the claudins, Occludin and junction adhesion molecule (JAM). Claudins, which consist of four transmembrane domains and two extracellular loops, make up tight junction strands. Emerging evidence suggests that the claudin family of proteins regulates transport through tight junctions via differential discrimination for solute size and charge. Claudin expression is often highly restricted to specific regions of different tissues and may have an important role in transcellular transport through tight junctions.

Synonyms:

CLD1, SEMP1, PRO944, UNQ481

Product images:

Western blot (WB) analysis of Claudin-1 antibody at 1/500 dilution. Lane 1: Hela whole cell lysate; Lane 2: Mouse kidney tissue lysate; Lane 3: Rat kidney tissue lysate.



Immunohistochemistry (IHC) analysis of Claudin-1 antibody in paraffin-embedded human breast carcinoma tissue.