

Product datasheet for **AP06056PU-M**

c-Jun (JUN) Rabbit Polyclonal Antibody

Product data:

Product Type:	Primary Antibodies
Applications:	IHC, WB
Recommended Dilution:	Immunohistochemistry on Paraffin sections: 1/50-1/200 Western blot: 1/500-1/1000.
Reactivity:	Human, Mouse, Rat
Host:	Rabbit
Clonality:	Polyclonal
Immunogen:	Synthetic peptide, corresponding to amino acids 201-250 of Human c-Jun.
Specificity:	Antibody detects endogenous levels of AP-1 / c-Jun protein (region surrounding Asn57).
Formulation:	Phosphate buffered saline (PBS), pH 7.2. State: Aff - Purified State: Liquid purified Ig fraction Preservative: 0.05% Sodium azide
Concentration:	1.0 mg/ml
Purification:	Affinity-chromatography using epitope-specific immunogen and the purity is > 95% (by SDS-PAGE)
Conjugation:	Unconjugated
Storage:	Store undiluted at 2-8°C for one month or (in aliquots) at -20°C for longer. Avoid repeated freezing and thawing.
Stability:	Shelf life: one year from despatch.
Predicted Protein Size:	~ 43, 48 kDa
Gene Name:	Jun proto-oncogene, AP-1 transcription factor subunit
Database Link:	<u>Entrez Gene 3725 Human P05412</u>



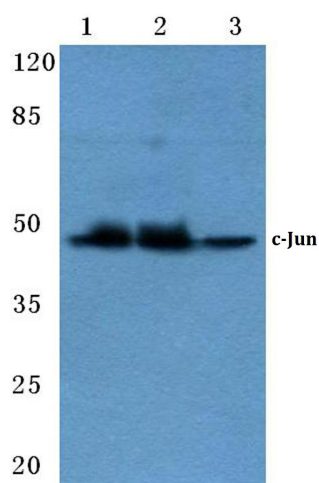
[View online »](#)

Background:

Genes belonging to the Jun and Fos oncogene families encode nuclear proteins that are found to be associated with a number of transcriptional complexes. The c-Jun protein is a major component of the transcription factor AP-1, originally shown to mediate phorbol ester tumor promoter (TPA)-induced expression of responsive genes through the TPA- response element (TRE). The Jun proteins form homo- and heterodimers which bind the TRE, while Fos proteins are active only as heterodimers with any of the Jun proteins. Fos/Jun heterodimers have a much higher affinity for the TRE than Jun homodimers. Ha-Ras augments c-Jun activity and stimulates phosphorylation of its activation domain. An inhibitor of Fos/Jun function, termed IP-1, associates with Fos and Jun and is inactivated upon phosphorylation induced by the cAMP-dependent protein kinase A (PKA).

Synonyms:

Transcription factor AP1

Product images:


Western blot (WB) analysis of c-Jun antibody at 1/500 dilution Lane 1:HEK293T cell lysate Lane 2:Raw264.7 cell lysate Lane 3:Rat kidney tissue lysate