

Product datasheet for **AP06053PU-M**

c-Jun (JUN) Rabbit Polyclonal Antibody

Product data:

Product Type:	Primary Antibodies
Applications:	IHC, IP, WB
Recommended Dilution:	Western blot: 1/500-1/1000. Immunofluorescence on Paraffin sections: 1/50-1/200. Immunoprecipitation: 1/50-1/200.
Reactivity:	Human, Mouse, Rat
Host:	Rabbit
Clonality:	Polyclonal
Immunogen:	Synthetic peptide, corresponding to amino acids 131-180 of Human c-Jun.
Specificity:	This antibody detects endogenous levels of AP-1 / c-Jun protein (region surrounding His164).
Formulation:	Phosphate buffered saline (PBS), pH 7.2. State: Aff - Purified State: Liquid purified Ig fraction Preservative: 15mM sodium azide
Concentration:	1.0 mg/ml
Purification:	Affinity-purified from rabbit antiserum by affinity-chromatography using epitope-specific immunogen and the purity is > 95% (by SDS-PAGE)
Conjugation:	Unconjugated
Storage:	Store undiluted at 2-8°C for one month or (in aliquots) at -20°C for longer. Avoid repeated freezing and thawing.
Stability:	Shelf life: one year from despatch.
Predicted Protein Size:	~36, 43, 48 kD
Gene Name:	Jun proto-oncogene, AP-1 transcription factor subunit
Database Link:	Entrez Gene 3725 Human P05412



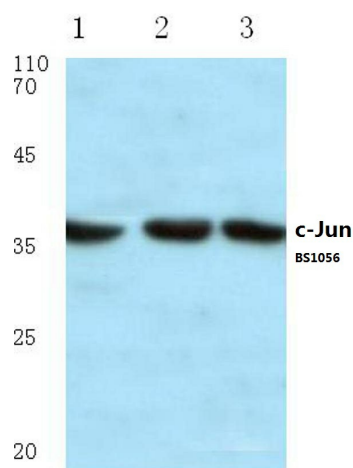
[View online »](#)

Background:

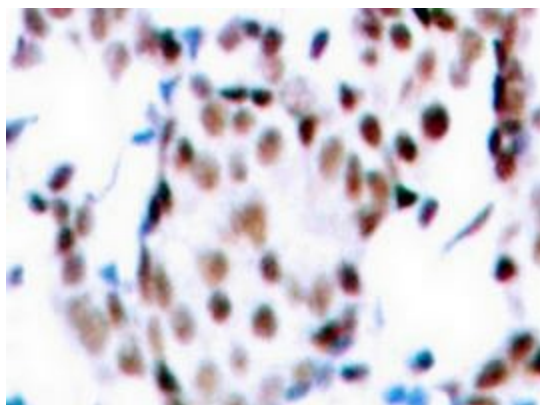
The c-Jun proto-oncogene was first identified as the cellular homolog of the avian sarcoma virus v-Jun oncogene. The c-Jun protein, along with c-Fos, is a component of the AP-1 transcriptional complex. c-Jun can form either Jun/Jun homodimers or Jun/Fos heterodimers via the leucine repeats in both proteins. Homo- and heterodimers bind to the TGACTCA consensus sequence present in numerous promoters and initially identified as the phorbol ester tumor promoter response element (TRE). Two additional genes, Jun B and Jun D, have been shown to be almost identical to c-Jun in their C-terminal regions, which are involved in dimerization and DNA binding, whereas their N-terminal domains, which are involved in transcriptional activation, diverge. All three form heterodimers among themselves and with c-Fos and other members of the Fos gene family.

Synonyms:

Transcription factor AP1

Product images:


Western blot (WB) analysis of c-Jun antibody at 1/500 dilution Lane 1: Hela whole cell lysate Lane 2: Mouse kidney tissue lysate Lane 3: PC12 whole cell lysate treated with UV



Immunohistochemical analysis of paraffin-embedded human breast carcinoma tissue using AP-1 / c-Jun antibody.