

## Product datasheet for **AP06050PU-N**

### Chk1 (CHEK1) Rabbit Polyclonal Antibody

#### Product data:

Product Type:	Primary Antibodies
Applications:	IHC, WB
Recommended Dilution:	<b>Immunohistochemistry on Paraffin sections:</b> 1/50-1/200. <b>Western blot:</b> 1/500-1/1000.
Reactivity:	Human, Mouse, Rat
Host:	Rabbit
Clonality:	Polyclonal
Immunogen:	Synthetic peptide, corresponding to amino acids 311-360 of Human Chk1.
Specificity:	This antibody detects endogenous levels of CHK1 protein (region surrounding Val339).
Formulation:	Phosphate buffered saline (PBS), pH 7.2. State: Aff - Purified State: Liquid purified Ig fraction Preservative: 0.05% sodium azide
Concentration:	1.0 mg/ml
Purification:	Affinity-chromatography using epitope-specific immunogen and the purity is > 95% (by SDS-PAGE)
Conjugation:	Unconjugated
Storage:	Store undiluted at 2-8°C for one month or (in aliquots) at -20°C for longer. Avoid repeated freezing and thawing.
Stability:	Shelf life: one year from despatch.
Predicted Protein Size:	~ 56 kDa
Gene Name:	checkpoint kinase 1
Database Link:	<a href="#">Entrez Gene 1111 Human</a> <a href="#">O14757</a>



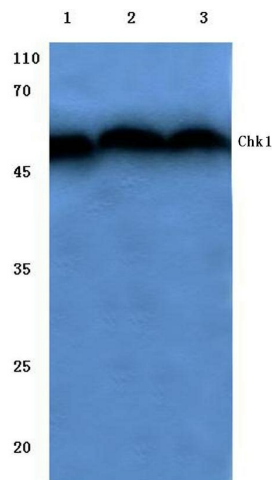
[View online »](#)

**Background:**

Cell cycle events are regulated by the sequential activation and deactivation of cyclin dependent kinases (Cdks) and by proteolysis of cyclins. Chk1 and Chk2 are involved in these processes as regulators of Cdks. Chk1 and Chk2 both function as essential components in the G2 DNA damage checkpoint by phosphorylating Cdc25C in response to DNA damage. Phosphorylation inhibits Cdc25C activity, thereby blocking mitosis. Cdc25A, Cdc25B and Cdc25C protein tyrosine phosphatases function as mitotic activators by dephosphorylating Cdc2 p34 on regulatory tyrosine residues. It has also been shown that Chk1 can phosphorylate Wee1 in vitro, providing evidence that the hyperphosphorylated form of Wee1, seen in cells delayed by Chk1 overexpression, is due to phosphorylation by Chk1.

**Synonyms:**

CHEK1, CHEK-1

**Product images:**

Western blot (WB) analysis of Chk1 antibody at 1/500 dilution Lane 1: HEK293T cell lysate Lane 2: Mouse kidney tissue lysate Lane 3: Rat heart tissue lysate