

Product datasheet for **AP06047PU-N**

CDK2 Rabbit Polyclonal Antibody

Product data:

Product Type:	Primary Antibodies
Applications:	IHC, WB
Recommended Dilution:	Western blot: 1/500-1/1000. Immunohistochemistry on Paraffin sections: 1/50-1/200.
Reactivity:	Human, Mouse, Rat
Host:	Rabbit
Clonality:	Polyclonal
Immunogen:	Synthetic peptide, corresponding to amino acids 125-170 of Human Cdk2.
Specificity:	This antibody detects endogenous levels of CDK2 protein (region surrounding Val154).
Formulation:	Phosphate buffered saline (PBS), pH 7.2. State: Aff - Purified State: Liquid purified Ig fraction Preservative: 0.05% sodium azide
Concentration:	1.0 mg/ml
Purification:	Affinity-chromatography using epitope-specific immunogen and the purity is > 95% (by SDS-PAGE)
Conjugation:	Unconjugated
Storage:	Store undiluted at 2-8°C for one month or (in aliquots) at -20°C for longer. Avoid repeated freezing and thawing.
Stability:	Shelf life: one year from despatch.
Predicted Protein Size:	~ 34 kDa
Gene Name:	cyclin-dependent kinase 2
Database Link:	Entrez Gene 1017 Human P24941



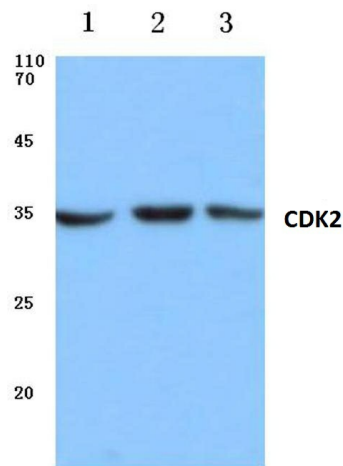
[View online »](#)

Background:

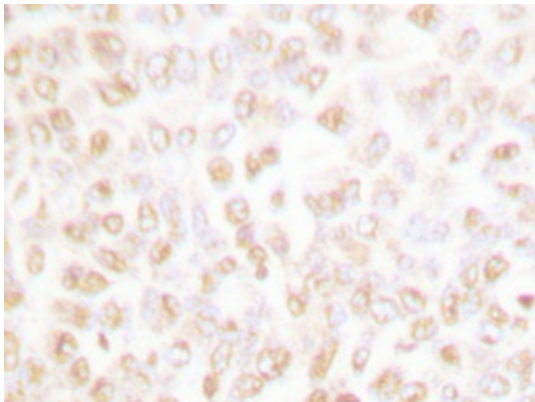
In vertebrates, as in yeast, multiple cyclins have been identified, including a total of eight such regulatory proteins in mammals. In contrast to the situation in yeast, the Cdc2 p34 kinase is not the only catalytic subunit identified in vertebrates that can interact with cyclins. While Cdc2 p34 is essential for the G2 to M transition in vertebrate cells, a second Cdc2-related kinase has also been implicated in cell cycle control. This protein, designated cyclin dependent kinase 2 (Cdk2) p33, also binds to cyclins and its kinase activity is temporally regulated during the cell cycle. Several additional Cdc2 p34- related cyclin dependent kinases have been identified. These include Cdk3, Cdk4, Cdk5, PCTAIRE-1, PCTAIRE-2, PCTAIRE-3, Cdk6, Cdk7 and Cdk8.

Synonyms:

p33 protein kinase

Product images:

Western blot (WB) analysis of Cdk2 antibody at 1/500 dilution. Lane 1: HEK293T cell lysate, Lane 2: Mouse brain tissue lysate, Lane 3: Rat heart tissue lysate.



Immunohistochemical analysis of paraffin-embedded human breast carcinoma tissue using CDK2 antibody.