

## Product datasheet for **AP06046PU-N**

### CDK2 Rabbit Polyclonal Antibody

#### Product data:

Product Type:	Primary Antibodies
Applications:	WB
Recommended Dilution:	<b>Western blot:</b> 1/500-1/1000.
Reactivity:	Human, Mouse, Rat
Host:	Rabbit
Clonality:	Polyclonal
Immunogen:	Synthetic peptide, corresponding to amino acids 125-170 of Human Cdk2.
Specificity:	This antibody detects endogenous levels of CDK2 protein (region surrounding Val154) .
Formulation:	Phosphate buffered saline (PBS), pH 7.2. State: Aff - Purified State: Liquid purified Ig fraction Preservative: 0.05% sodium azide
Concentration:	1.0 mg/ml
Purification:	Affinity-chromatography using epitope-specific immunogen and the purity is > 95% (by SDS-PAGE)
Conjugation:	Unconjugated
Storage:	Store undiluted at 2-8°C for one month or (in aliquots) at -20°C for longer. Avoid repeated freezing and thawing.
Stability:	Shelf life: one year from despatch.
Predicted Protein Size:	~ 34 kDa
Gene Name:	cyclin-dependent kinase 2
Database Link:	<a href="#">Entrez Gene 1017 Human P24941</a>



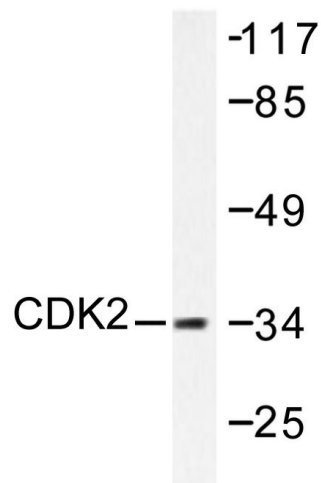
[View online »](#)

**Background:**

Cdk2 is a member of the Ser/Thr protein kinase family. It is highly similar to the gene products of *S. cerevisiae* *cdc28*, and *S. pombe* *cdc2*. It is a catalytic subunit of the cyclin-dependent protein kinase complex, whose activity is restricted to the G1-S phase, and is essential for cell cycle G1/S phase transition. This protein associates with and is regulated by the regulatory subunits of the complex including cyclin A or E, CDK inhibitor p21Cip1 (CDKN1A) and p27Kip1 (CDKN1B). Its activity is also regulated by protein phosphorylation. Two alternatively spliced variants and multiple transcription initiation sites of this gene have been reported.

**Synonyms:**

p33 protein kinase

**Product images:**

Western blot (WB) analysis of CDK2 antibody in extracts from A2780 cells.