

Product datasheet for **AP06046PU-M**

CDK2 Rabbit Polyclonal Antibody

Product data:

Product Type:	Primary Antibodies
Applications:	WB
Recommended Dilution:	Western blot: 1/500-1/1000.
Reactivity:	Human, Mouse, Rat
Host:	Rabbit
Clonality:	Polyclonal
Immunogen:	Synthetic peptide, corresponding to amino acids 125-170 of Human Cdk2.
Specificity:	This antibody detects endogenous levels of CDK2 protein (region surrounding Val154) .
Formulation:	Phosphate buffered saline (PBS), pH 7.2. State: Aff - Purified State: Liquid purified Ig fraction Preservative: 0.05% sodium azide
Concentration:	1.0 mg/ml
Purification:	Affinity-chromatography using epitope-specific immunogen and the purity is > 95% (by SDS-PAGE)
Conjugation:	Unconjugated
Storage:	Store undiluted at 2-8°C for one month or (in aliquots) at -20°C for longer. Avoid repeated freezing and thawing.
Stability:	Shelf life: one year from despatch.
Predicted Protein Size:	~ 34 kDa
Gene Name:	cyclin-dependent kinase 2
Database Link:	Entrez Gene 1017 Human P24941



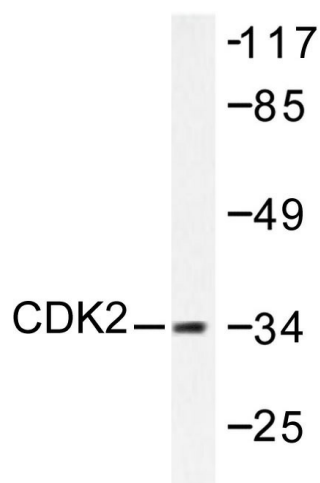
[View online »](#)

Background:

Cdk2 is a member of the Ser/Thr protein kinase family. It is highly similar to the gene products of *S. cerevisiae* cdc28, and *S. pombe* cdc2. It is a catalytic subunit of the cyclin-dependent protein kinase complex, whose activity is restricted to the G1-S phase, and is essential for cell cycle G1/S phase transition. This protein associates with and is regulated by the regulatory subunits of the complex including cyclin A or E, CDK inhibitor p21Cip1 (CDKN1A) and p27Kip1 (CDKN1B). Its activity is also regulated by protein phosphorylation. Two alternatively spliced variants and multiple transcription initiation sites of this gene have been reported.

Synonyms:

p33 protein kinase

Product images:


Western blot (WB) analysis of CDK2 antibody in extracts from A2780 cells.