

## Product datasheet for **AP06045PU-N**

### CDC6 Rabbit Polyclonal Antibody

#### Product data:

Product Type:	Primary Antibodies
Applications:	IHC, WB
Recommended Dilution:	<b>Western blot:</b> 1/500-1/1000. <b>Immunohistochemistry on Paraffin sections:</b> 1/50-1/200.
Reactivity:	Human, Mouse
Host:	Rabbit
Clonality:	Polyclonal
Immunogen:	Synthetic peptide, corresponding to amino acids 12-63 of Human Cdc6.
Specificity:	This antibody detects endogenous levels of CDC6 protein (region surrounding Val48).
Formulation:	Phosphate buffered saline (PBS), pH 7.2. State: Aff - Purified State: Liquid purified Ig fraction Preservative: 0.05% sodium azide
Concentration:	1.0 mg/ml
Purification:	Affinity-chromatography using epitope-specific immunogen and the purity is > 95% (by SDS-PAGE)
Conjugation:	Unconjugated
Storage:	Store undiluted at 2-8°C for one month or (in aliquots) at -20°C for longer. Avoid repeated freezing and thawing.
Stability:	Shelf life: one year from despatch.
Predicted Protein Size:	~ 62 kDa
Gene Name:	cell division cycle 6
Database Link:	<a href="#">Entrez Gene 990 Human Q99741</a>



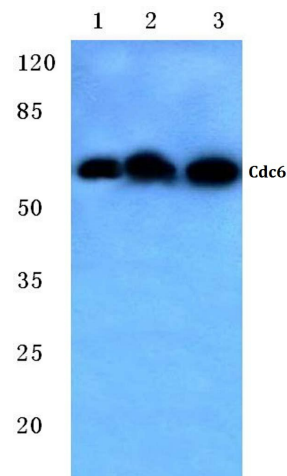
[View online »](#)

**Background:**

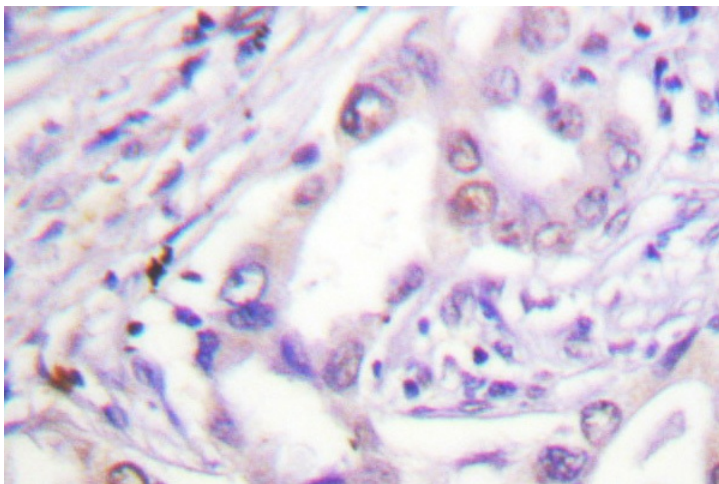
Cell cycle events are regulated by the sequential activation and deactivation of cyclin dependent kinases (Cdks) and by the proteolysis of cyclins. The cell division cycle (Cdc) genes are required at various points in the cell cycle. Cdc25A, Cdc25B and Cdc25C protein tyrosine phosphatases function as mitotic activators by dephosphorylating Cdc2 p34 on regulatory tyrosine residues. Cdc6 is the human homolog of *Saccharomyces cerevisiae* Cdc6, which is involved in the initiation of DNA replication. Cdc37 appears to facilitate Cdk4/cyclin D1 complex formation and has been shown to form a stable complex with HSP 90. Cdc34, Cdc27 and Cdc16 function as ubiquitinconjugating enzymes. Cdc34 is thought to be the structural and functional homolog of *Saccharomyces cerevisiae* Cdc34, which is essential for the G1 to S phase transition. Cdc16 and Cdc27 are components of the APC (anaphasepromoting complex) which ubiquitinates cyclin B, resulting in cyclin B/Cdk complex degradation.

**Synonyms:**

CDC18L, CDC6-related protein, p62(cdc6), HsCDC6, Cdc18-related protein, HsCdc18

**Product images:**

Western blot (WB) analysis of Cdc6 antibody at 1/500 dilution Lane 1:Hela cell lysate Lane 2:Raw264.7 cell lysate Lane 3:H9C2 cell lysate



Immunohistochemical analysis of paraffin-embedded human lung carcinoma tissue using CDC6 antibody.