

## Product datasheet for **AP06043PU-N**

### CDC25B Rabbit Polyclonal Antibody

#### Product data:

Product Type:	Primary Antibodies
Applications:	IF, WB
Recommended Dilution:	<b>Western blot:</b> 1/500-1/1000. <b>Immunofluorescence:</b> 1/50-1/200.
Reactivity:	Human, Mouse, Rat
Host:	Rabbit
Clonality:	Polyclonal
Immunogen:	Synthetic peptide, corresponding to amino acids 280-340 of Human Cdc25B.
Specificity:	This antibody detects endogenous levels of CDC25B protein (region surrounding Arg317).
Formulation:	Phosphate buffered saline (PBS), pH 7.2. State: Aff - Purified State: Liquid purified Ig fraction Preservative: 0.05% sodium azide
Concentration:	1.0 mg/ml
Purification:	Affinity-chromatography using epitope-specific immunogen and the purity is > 95% (by SDS-PAGE)
Conjugation:	Unconjugated
Storage:	Store undiluted at 2-8°C for one month or (in aliquots) at -20°C for longer. Avoid repeated freezing and thawing.
Stability:	Shelf life: one year from despatch.
Predicted Protein Size:	~ 65 kDa
Gene Name:	cell division cycle 25B
Database Link:	<a href="#">Entrez Gene 994 Human P30305</a>



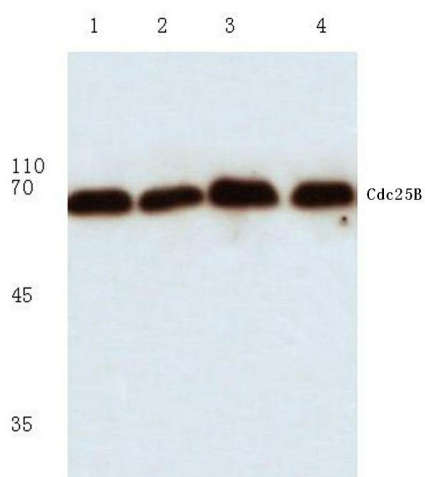
[View online »](#)

**Background:**

The activity of cyclin dependent kinases in cell cycle is regulated by the phosphorylation status, which is controlled by the antagonistic action of wee 1 kinase and Cdc25 phosphatases. Three Cdc25 genes are present in human cells: Cdc25A, Cdc25B and Cdc25C. Cdc25A and Cdc25B are expressed throughout the cell cycle, with peak expression in G1 for Cdc25A and in both G1 S phase and G2 for Cdc25B. Cdc25C is mainly expressed in G2 phase.

**Synonyms:**

CDC25HU2

**Product images:**

Western blot (WB) analysis of Cdc25B antibody at 1/500 dilution Lane 1:Hela cell lysate Lane 2:Jurkat cell lysate Lane 3:Mouse kidney tissue lysate Lane 4:Mouse brain tissue lysate