

Product datasheet for **AP06040PU-N**

Caveolin 1 (CAV1) Rabbit Polyclonal Antibody

Product data:

Product Type:	Primary Antibodies
Applications:	ELISA, IF, WB
Recommended Dilution:	Western blot: 1/500-1/1000. Immunofluorescence: 1/50-1/200. Immunohistochemistry on Paraffin Sections: 1/50-1/200.
Reactivity:	Human, Mouse, Rat
Host:	Rabbit
Clonality:	Polyclonal
Immunogen:	Synthetic peptide, corresponding to amino acids 150-200 of Human Caveolin-1.
Specificity:	This antibody detects endogenous levels of Caveolin-1 protein (region surrounding Val163).
Formulation:	Phosphate buffered saline (PBS), pH~7.2 State: Aff - Purified State: Liquid purified Ig fraction Preservative: 0.05% Sodium Azide
Concentration:	1.0 mg/ml
Purification:	Affinity chromatography using epitope-specific immunogen (> 95% pure by SDS-PAGE)
Conjugation:	Unconjugated
Storage:	Store undiluted at 2-8°C for one month or (in aliquots) at -20°C for longer. Avoid repeated freezing and thawing.
Stability:	Shelf life: One year from despatch.
Predicted Protein Size:	~25 kDa
Gene Name:	caveolin 1
Database Link:	Entrez Gene 857 Human Q03135



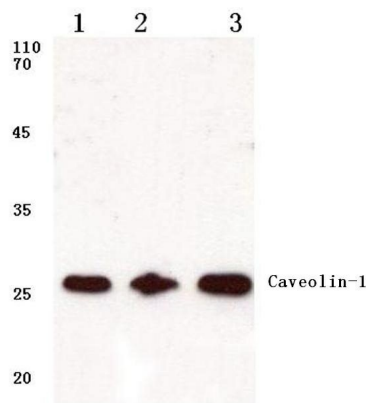
[View online »](#)

Background:

Caveolae are specialised domains of the plasma membrane that are implicated in the sequestration of a variety of lipid and protein molecules. It has been suggested that these important cellular organelles have a pivotal role in such diverse biochemical processes as lipid metabolism, growth regulation, signal transduction, and apoptosis. Caveolin interacts with and regulates heterotrimeric G proteins. Currently, there are three members of the caveolin multigene family which are known to encode 21 to 24 kDa integral membrane proteins that comprise the major structural component of the caveolar membrane in vivo. Caveolin 2 protein is abundantly expressed in fibroblasts and differentiated adipocytes, smooth and skeletal muscle, and endothelial cells. The expression of caveolin 1 is similar to that of caveolin 2 while caveolin 3 expression appears to be limited to muscle tissue types.

Synonyms:

CAV1

Product images:

Western blot (WB) analysis of Caveolin-1 antibody at 1/500 dilution Lane 1:A549 cell lysate Lane 2:Mouse kidney tissue lysate Lane 3:Rat kidney tissue lysate