

Product datasheet for **AP06036PU-N**

Caspase 10 (CASP10) Rabbit Polyclonal Antibody

Product data:

| | |
|-------------------------|---|
| Product Type: | Primary Antibodies |
| Applications: | IF, IHC, WB |
| Recommended Dilution: | Immunofluorescence: 1/50-1/200. Immunohistochemistry on Paraffin sections: 1/50-1/200. Western blot: 1/500-1/1000. |
| Reactivity: | Human |
| Host: | Rabbit |
| Clonality: | Polyclonal |
| Immunogen: | Synthetic peptide, corresponding to amino acids 410-462 of Human Caspase 10. |
| Specificity: | This antibody detects endogenous levels of Caspase 10 protein (region surrounding Lys442). |
| Formulation: | Phosphate buffered saline (PBS), pH 7.2. State: Aff - Purified State: Liquid purified Ig fraction Preservative: 0.05% sodium azide |
| Concentration: | 1.0 mg/ml |
| Purification: | Affinity-chromatography using epitope-specific immunogen and the purity is > 95% (by SDS-PAGE) |
| Conjugation: | Unconjugated |
| Storage: | Store undiluted at 2-8°C for one month or (in aliquots) at -20°C for longer. Avoid repeated freezing and thawing. |
| Stability: | Shelf life: one year from despatch. |
| Predicted Protein Size: | ~ 59 kDa |
| Gene Name: | caspase 10 |
| Database Link: | Entrez Gene 843 Human Q92851 |



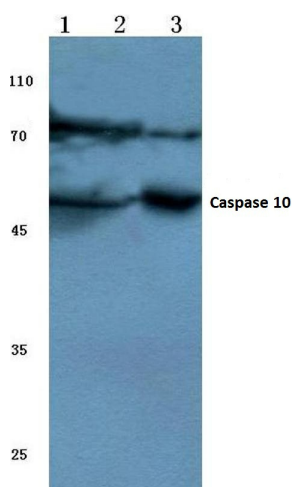
[View online »](#)

Background:

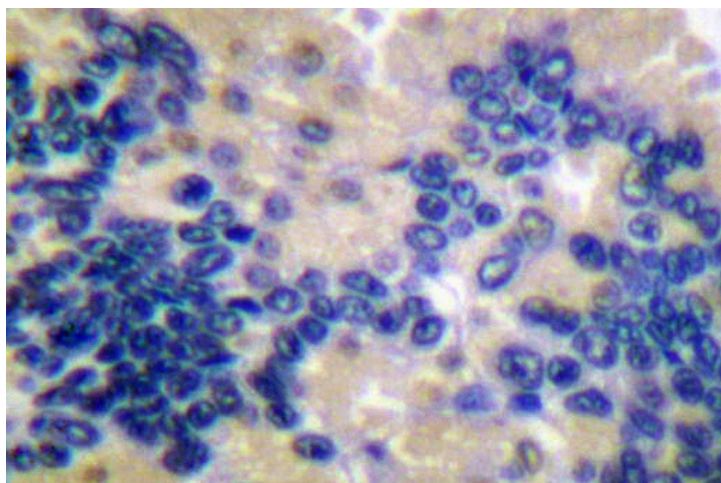
Four isoforms of caspase 10 (caspase 10a, 10b, 10c, and 10d) having the same prodomain but different mature large and small subdomain, have been described. Caspase 10 contains two death domains (DED) involved in linking to the death effector domain of the adapter protein FADD and recruiting the complex to TNFR1 and Fas. The inactive procaspase 10 is variably expressed in many tissues and cell lines as a cytosolic protein. The mature form of caspase 10 comprises two subunits, p23/p17 (splice isoforms) and p12. Interestingly, a caspase 9-dependent processing of caspase 10 by caspase 6 in cell-free extracts has recently been suggested. Caspase 10 can cleave and activate caspases 3, 4, 6, 7, 8, and 9. This is followed by cleavage of numerous key proteins, including the nuclear protein PARP.

Synonyms:

CASP-10, CASP10, MCH4, FLICE2

Product images:

Western blot (WB) analysis of Caspase-10 antibody at 1/500 dilution Lane 1:Hela cell lysate Lane 2:Mouse heart tissue lysate Lane 3:Rat heart tissue lysate



Immunohistochemical analysis of paraffin-embedded human lung carcinoma tissue using Caspase 10 antibody.