

## Product datasheet for **AP06035PU-M**

### CARD6 Rabbit Polyclonal Antibody

#### Product data:

Product Type:	Primary Antibodies
Applications:	IF, IHC, WB
Recommended Dilution:	<b>Immunofluorescence:</b> 1/50-1/200. <b>Immunohistochemistry on Paraffin sections:</b> 1/50-1/200. <b>Western blot:</b> 1/500-1/1000.
Reactivity:	Human
Host:	Rabbit
Clonality:	Polyclonal
Immunogen:	Synthetic peptide, corresponding to the N-terminus of Human CARD6.
Specificity:	This antibody detects endogenous levels of CARD6/CIN protein (region surrounding Ala2).
Formulation:	Phosphate buffered saline (PBS), pH 7.2. State: Aff - Purified State: Liquid purified Ig fraction Preservative: 0.05% sodium azide
Concentration:	1.0 mg/ml
Purification:	Affinity-chromatography using epitope-specific immunogen and the purity is > 95% (by SDS-PAGE)
Conjugation:	Unconjugated
Storage:	Store undiluted at 2-8°C for one month or (in aliquots) at -20°C for longer. Avoid repeated freezing and thawing.
Stability:	Shelf life: one year from despatch.
Predicted Protein Size:	~ 116 kDa
Gene Name:	caspase recruitment domain family member 6
Database Link:	<a href="#">Entrez Gene 84674 Human Q9BX69</a>



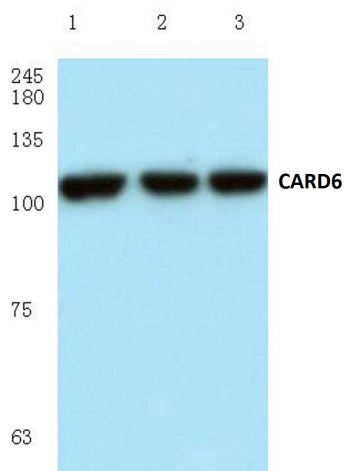
[View online »](#)

**Background:**

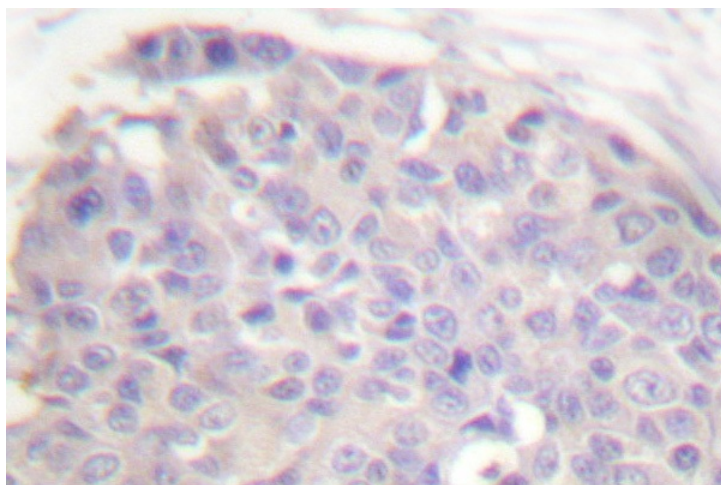
Membrane-associated guanylate kinase (MAGUK) family members localize to the plasma membrane and function as molecular scaffolds for the assembly of multi-protein complexes. The MAGUK family includes several mammalian proteins related to the *Drosophila* tumor suppressor discs-large (dlg) gene product, such as postsynaptic proteins, GKAPs, the tight junction associated proteins (ZO-1–3) and the caspase-associated recruitment domain (CARD) proteins, CARD 6, CARD 8-12 and CARD 14. CARD 6 is a 311 amino acid protein that associates with microtubules and acts as a selective mediator of NFκB activation. CARD 6 is structurally and functionally related to the superfamily of interferon (IFN)-inducible GTPases, a group that comprises host defense proteins which mediate cell-autonomous immunity. RICK, the receptorinteracting protein (RIP)-like interacting caspase-like apoptosis regulatory protein kinase, interacts with CARD 6 and targets it to aggresomes, regions of the cell where protein aggregates collect.

**Synonyms:**

CINCIN1

**Product images:**


Western blot (WB) analysis of CARD6/CINCIN1 antibody in extracts from HeLa cells.



Immunohistochemical analysis of paraffin-embedded human breast carcinoma tissue using CARD6 antibody.