

Product datasheet for **AP06034PU-N**

CEBP Beta (CEBPB) Rabbit Polyclonal Antibody

Product data:

Product Type:	Primary Antibodies
Applications:	IHC, WB
Recommended Dilution:	Western blot: 1/500-1/1000. Immunohistochemistry on Paraffin Sections: 1/50-1/200.
Reactivity:	Human, Mouse, Rat
Host:	Rabbit
Clonality:	Polyclonal
Immunogen:	Synthetic peptide, corresponding to amino acids 200-250 of Human C/EBP- β .
Specificity:	This antibody detects endogenous levels of C/EBP-beta protein. (region surrounding Ser229/182)
Formulation:	Phosphate buffered saline (PBS), pH~7.2 State: Aff - Purified State: Liquid purified Ig fraction (> 95% pure by SDS-PAGE) Preservative: 0.05% Sodium Azide
Concentration:	1.0 mg/ml
Purification:	Affinity Chromatography using epitope-specific immunogen
Conjugation:	Unconjugated
Storage:	Store undiluted at 2-8°C for one month or (in aliquots) at -20°C for longer. Avoid repeated freezing and thawing.
Stability:	Shelf life: one year from despatch.
Predicted Protein Size:	~36 kDa
Gene Name:	CCAAT/enhancer binding protein beta
Database Link:	Entrez Gene 1051 Human P17676



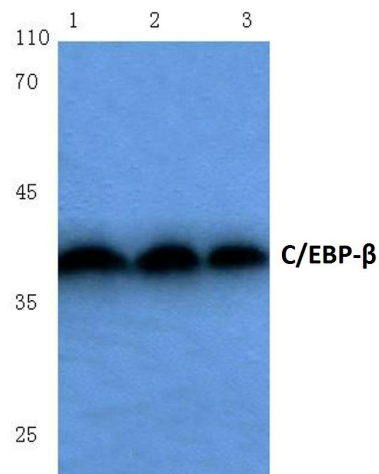
[View online »](#)

Background:

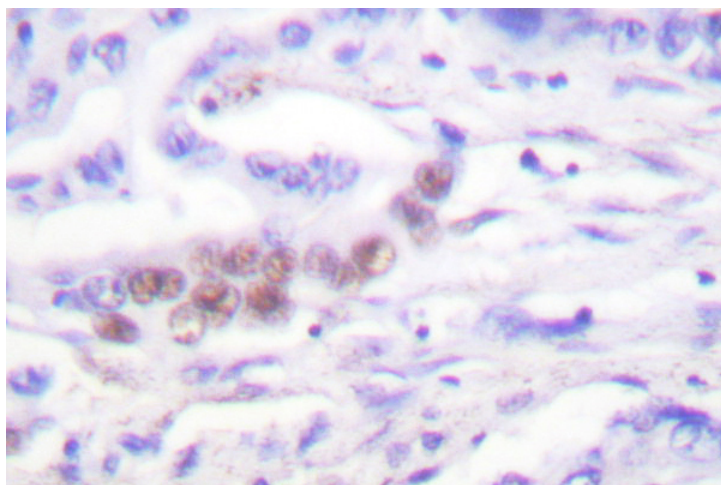
CCAAT-enhancer binding proteins (C/EBP) are basic region/leucine zipper (bZIP) transcription factors selectively expressed during the differentiation of liver, adipose tissue, blood cells and the endocrine pancreas. C/EBP β is a member of the C/EBP transcription factor family. The C/EBP β gene encodes several isoforms, which have truncated transcription activation domains by the alternative translational initiation at multiple AUG start sites. Initiation of translation at the in-frame AUGs forms four C/EBP β isoforms. C/EBP β is also known as interleukin 6-dependent DNA-binding protein (IL6DBP), liver activator protein(LAP) or liver-enriched transcriptional activator protein transcription factor 5 (TCF5). C/EBP β contributes to the regulation of the acute phase response in hepatocytes. Stat3 has an important function in IL-6-mediated transcription of the C/EBP β gene that has direct implication for acute phase response in liver cells. The 35 kDa C/EBP β form requires phosphorylation for its DNA binding ability, and increased binding of C/EBP β isoforms during acute-phase reaction occurs through its upregulation and structural modification.

Synonyms:

C/EBP beta, TCF5, LAP, NF-IL6

Product images:

Western blot (WB) analysis of C/EBP-beta antibody at 1/500 dilution Lane 1: HeLa cell lysate Lane 2: Mouse brain tissue lysate Lane 3: Rat kidney tissue lysate



Immunohistochemistry (IHC) analyzes of C7EBP-beta antibody in paraffin-embedded human lung carcinoma tissue.